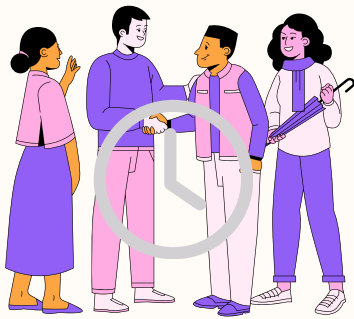
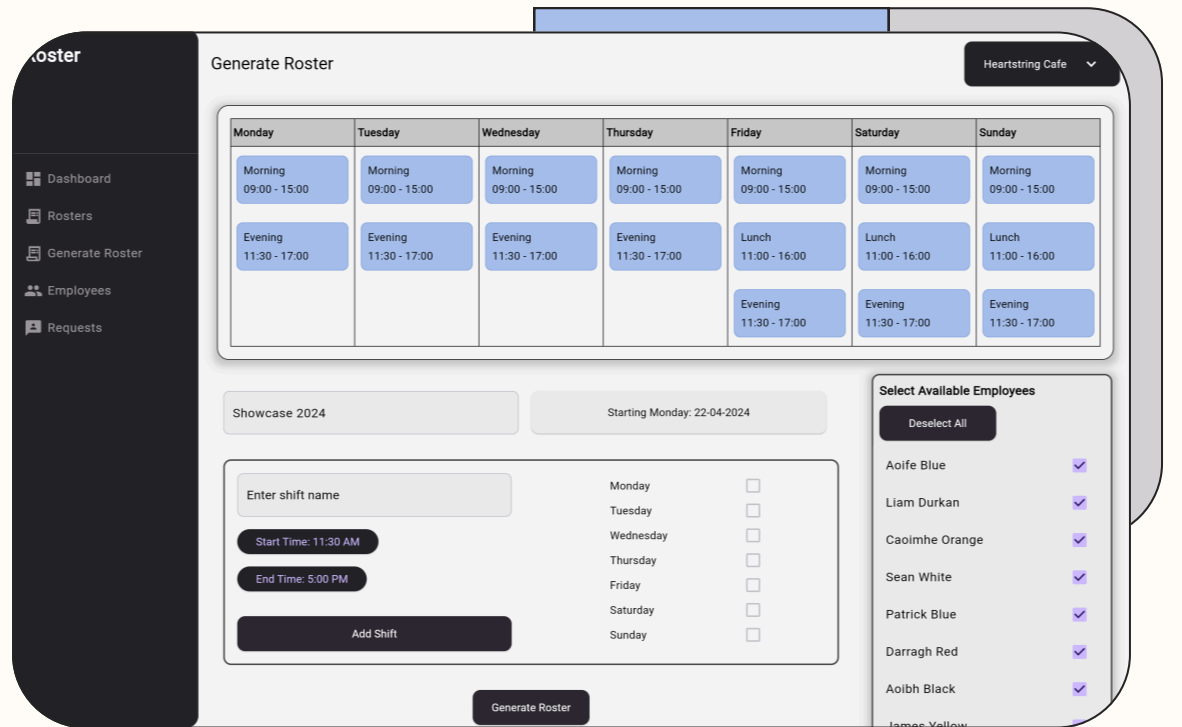
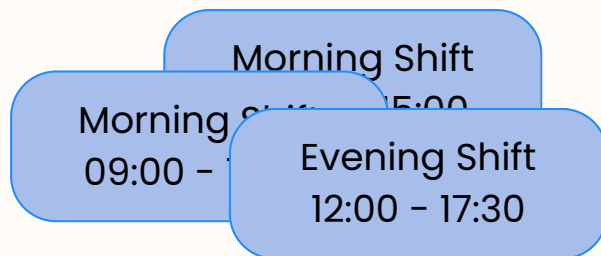
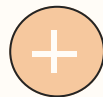


Employee Scheduling & Roster Generation

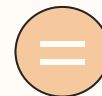
- **GENERATE CONFLICT FREE ROSTERS**
- **STORE EMPLOYEE AVAILABILITY**
- **TIME OFF REQUEST HANDLING.**
- **PUBLISH & EXPORT ROSTERS**
- **CUSTOMISE ROSTERS USING THE CONFLICT DETECTOR**



EMPLOYEE AVAILABILITY



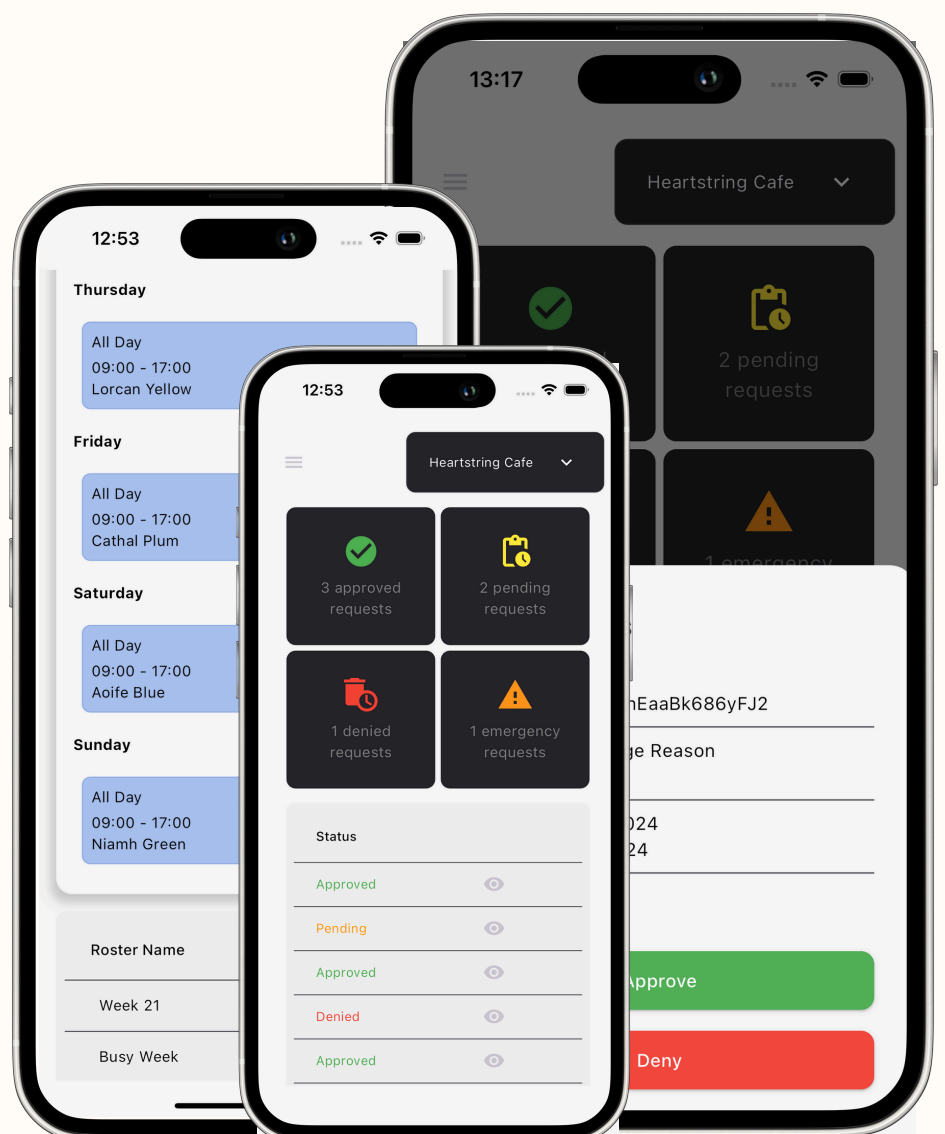
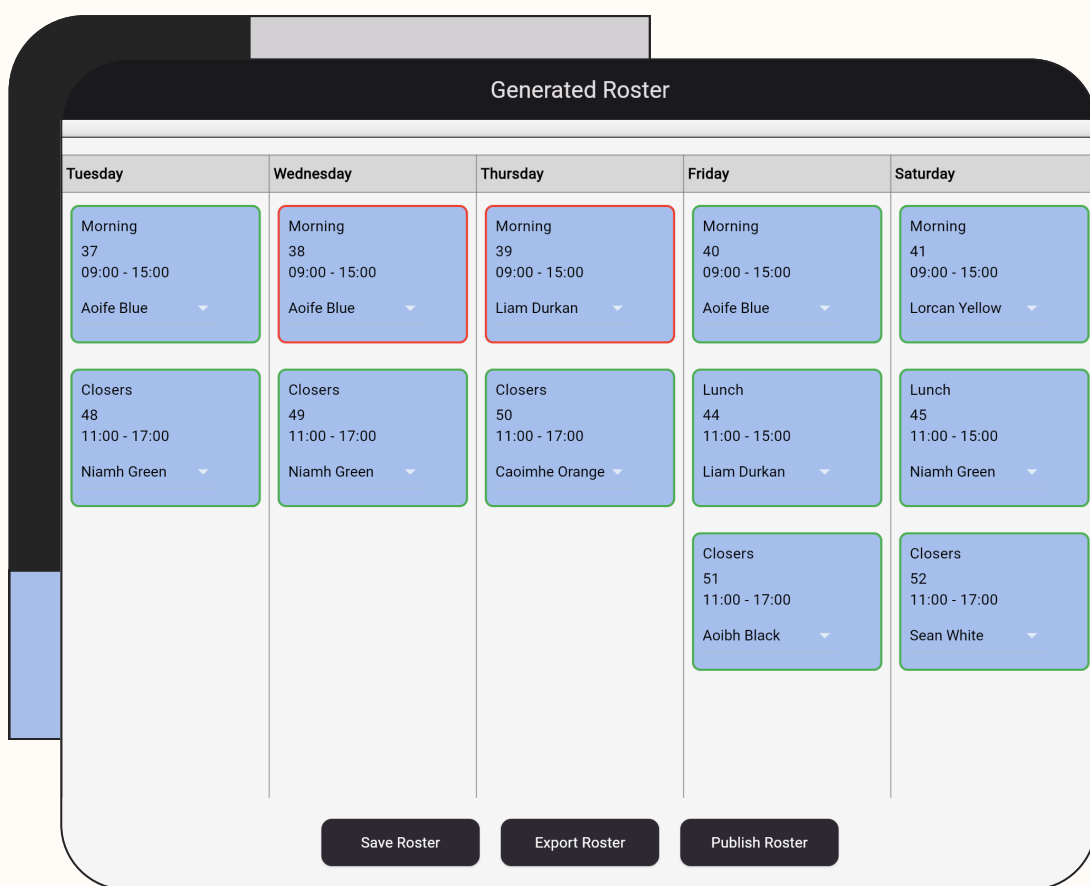
REQUIRED SHIFTS



CONFLICT FREE ROSTER

Can I have Thursday off please?
Hey, I just book my holidays for June 15th

STAFF REQUESTS



After generating your conflict-free roster, you can confidently rearrange staff using the Conflict Detector. When assigning an employee to a shift they are unavailable for, the shift will be highlighted in red, providing instant visual feedback.