

Institiúid Teicneolaíochta Cheatharlach



# LifeReceitas

4<sup>th</sup> Year Project Deign Manual

Student Name: Fillipe Soares

Student ID: C00203202

Supervisor: Joseph Kehoe

# Table of Contents

<b>Introduction</b>	<b>2</b>
<b>Sequence Diagrams</b>	<b>3</b>
CRUD Account Sequence Diagram (Create)	3
CRUD Account Sequence Diagram (Update)	4
CRUD Account Sequence Diagram (Delete)	5
Login Sequence Diagram	6
Logout Sequence Diagram	6
CRUD Cookbook Sequence Diagram (Create)	7
CRUD Cookbook Sequence Diagram (Read/View)	8
CRUD Cookbook Sequence Diagram (Update)	9
CRUD Cookbook Sequence Diagram (Delete)	10
Search Recipe Sequence Diagram	11
CRUD Recipe Sequence Diagram (Create)	12
CRUD Recipe Sequence Diagram (Read/View)	12
CRUD Recipe Sequence Diagram (Update)	13
CRUD Recipe Sequence Diagram (Delete)	14
Rate Recipe Sequence Diagram	15
Save Recipe to Cookbook Sequence Diagram	16
Start Private Message Sequence Diagram	17
Open Private Message Sequence Diagram	17
<b>Class Diagrams</b>	<b>18</b>
<b>Entity Relationship Diagram</b>	<b>19</b>
<b>GUI Design</b>	<b>20</b>
Main Screen	20
Sign Up Screen	21
Login Screen	21
Menu Screen	22
Update Account Screen	24
Delete Account Screen	25
Create Cookbook Screen	26
View Cookbook Screen	27
Update Cookbook Screen	28
Delete Cookbook Screen	29
Search Recipe Screen	30
Create Recipe Screen	31
View Recipe Screen	31
Update Recipe Screen	33
Delete Recipe Screen	34
Rate Recipe Screen	35
Save Recipe to Cookbook Screen	36
Private Message Screen	37
<b>Technology Stack</b>	<b>37</b>

# Introduction

The goal of this research is to go through the features listed in the functional specification in further detail. The goal is to provide a more detailed technical and visual description of what a progressive web application would entail.

This document will provide various diagrams in order to illustrate the application in detail. The diagrams found in this document are as follows:

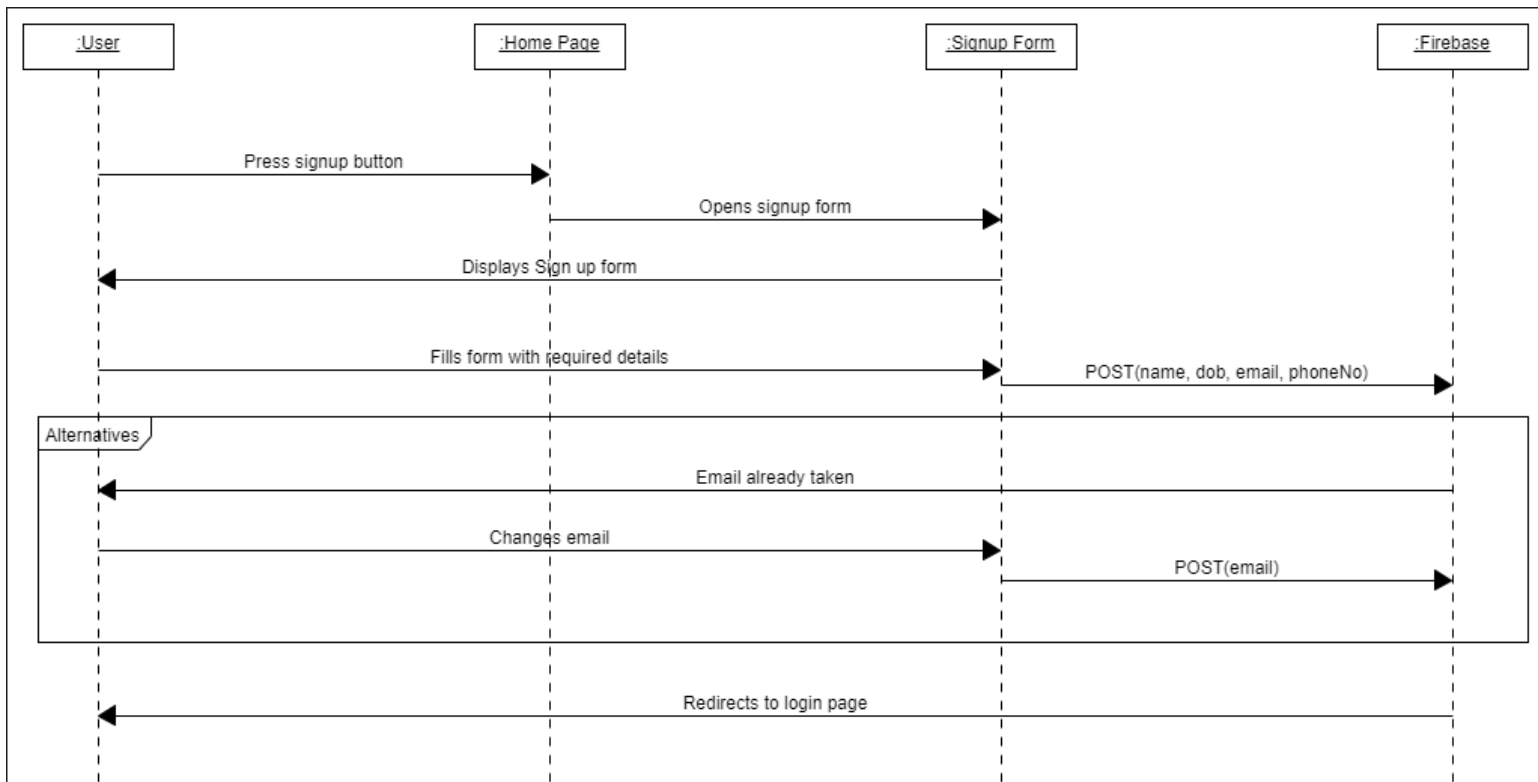
- Sequence Diagrams - will illustrate how each object interacts and communicates with each other.
- Class Diagram - will illustrate the structure of the system represented by the classes, attributes, methods, and relationships between objects.
- Entity Relationship Diagram - will illustrate the relationship between all the entities sets in the database.

This document will also provide GUI Screens for each Use Case for a better understanding of how the application will work.

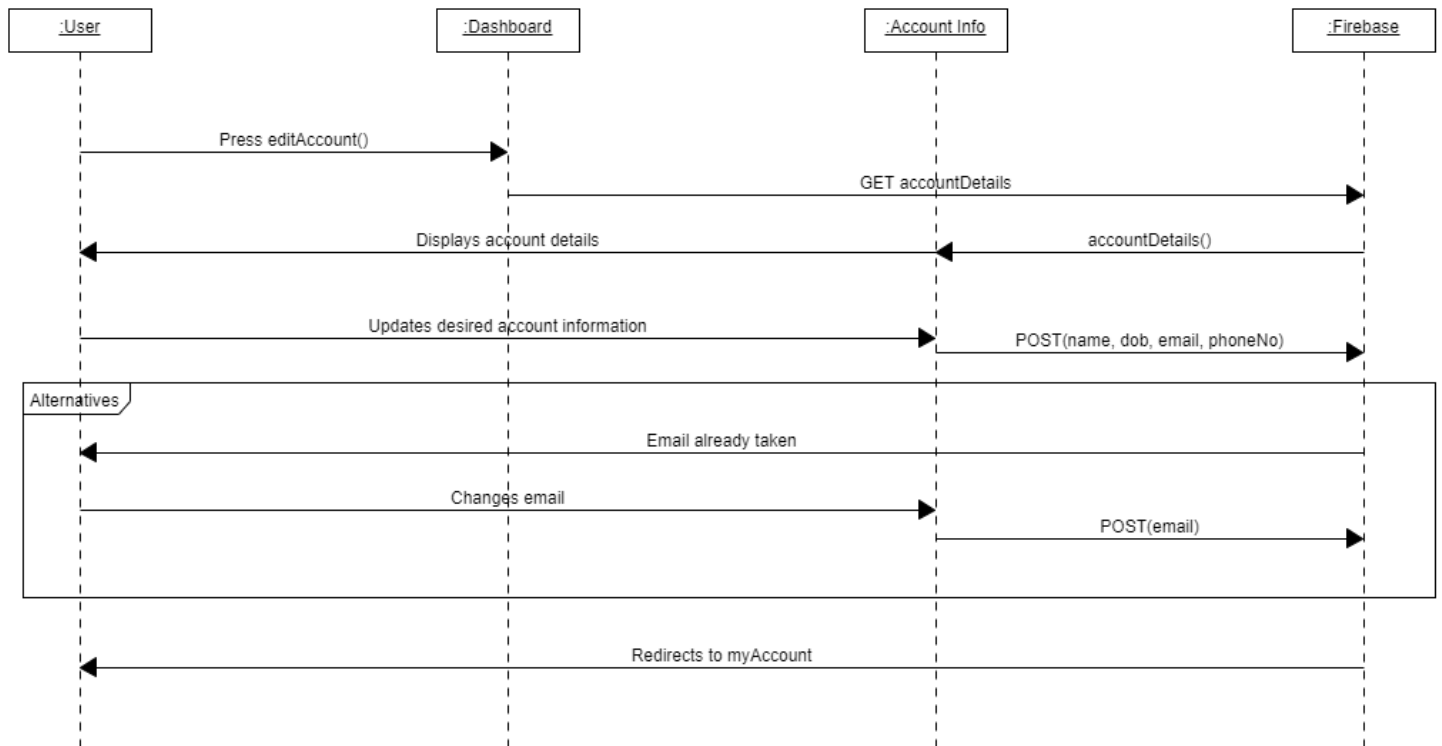
At last, this document will outline the technology stacks involved in the development of this application.

# Sequence Diagrams

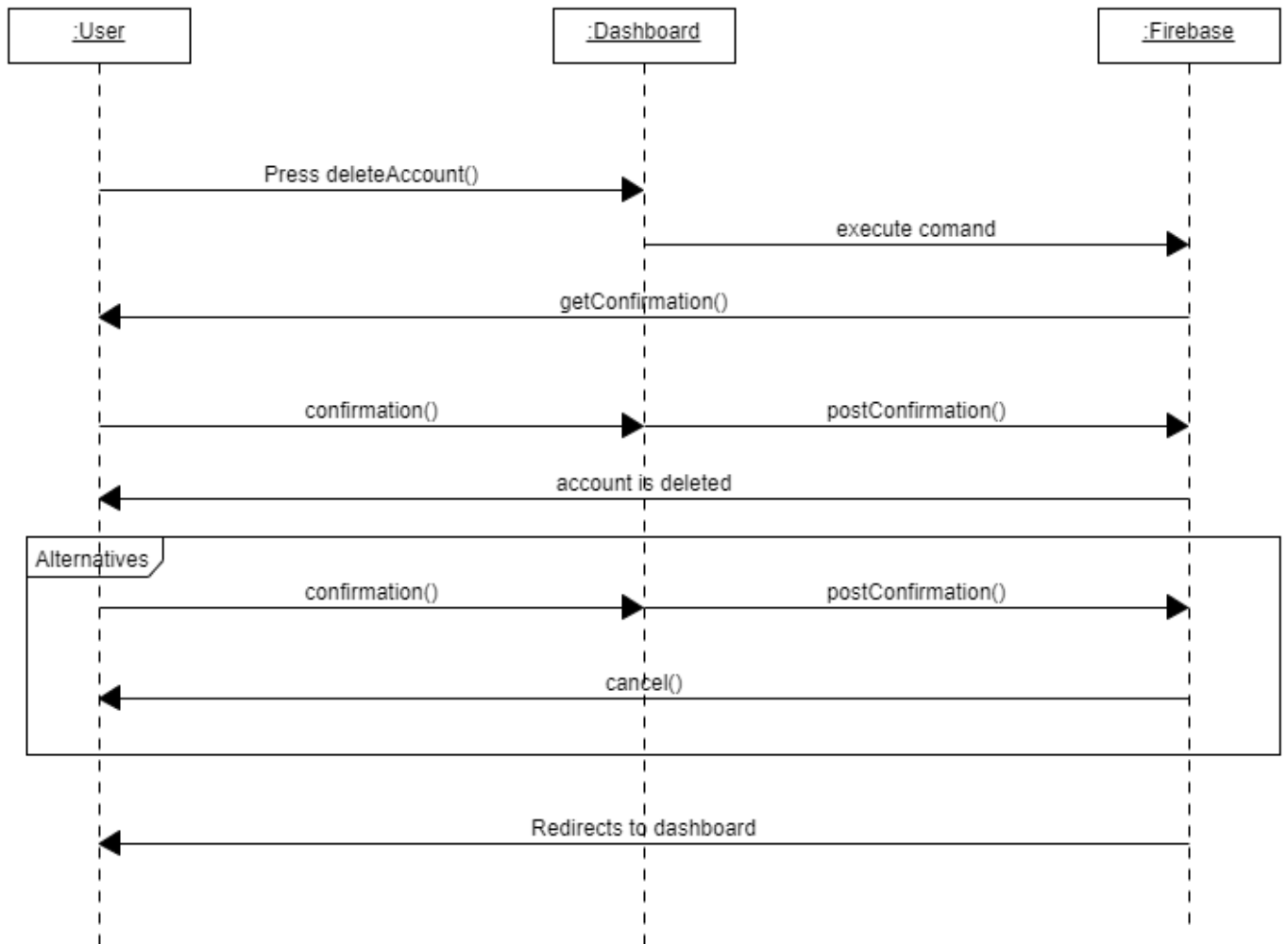
## CRUD Account Sequence Diagram (Create)



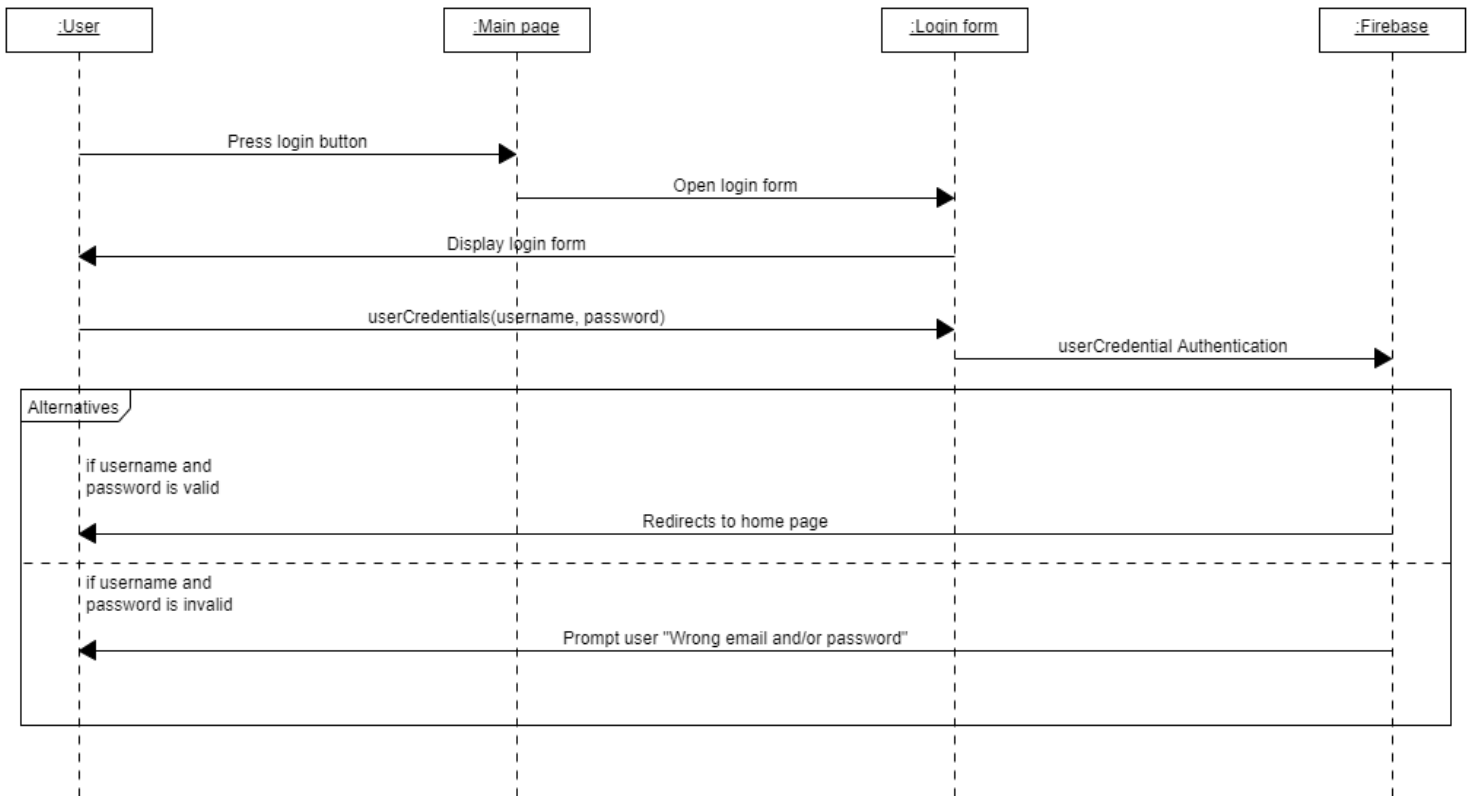
## CRUD Account Sequence Diagram (Update)



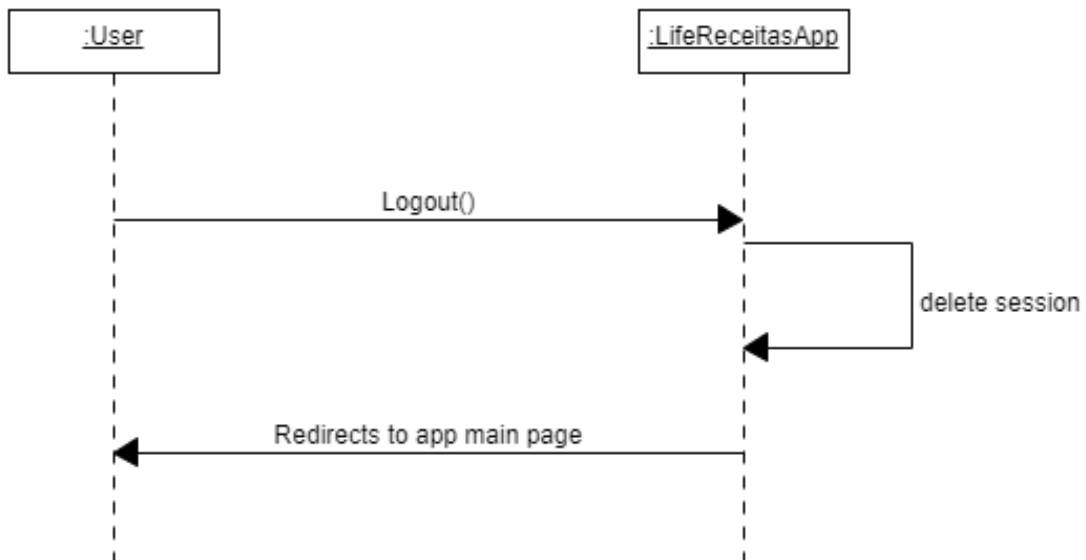
# CRUD Account Sequence Diagram (Delete)



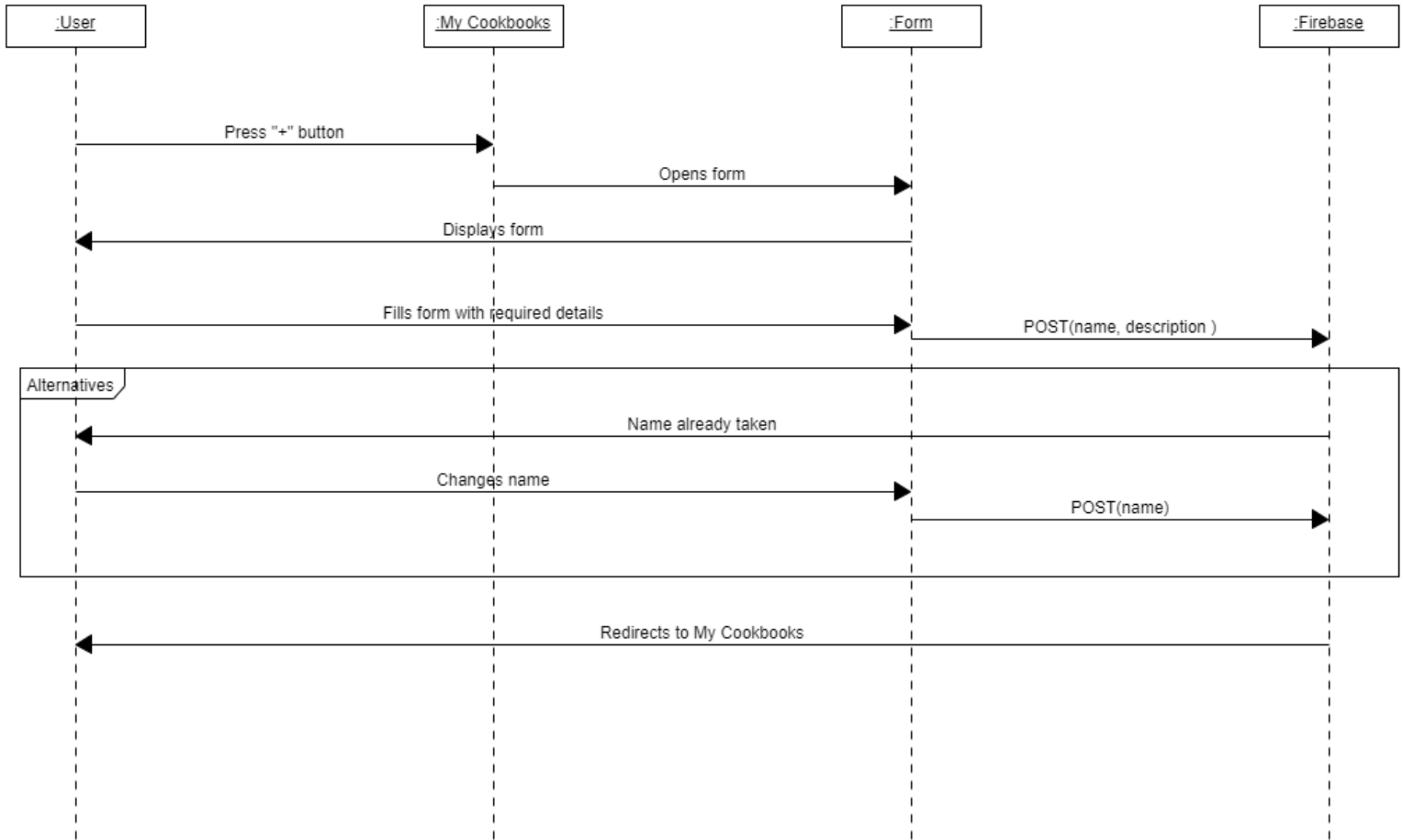
## Login Sequence Diagram



## Logout Sequence Diagram

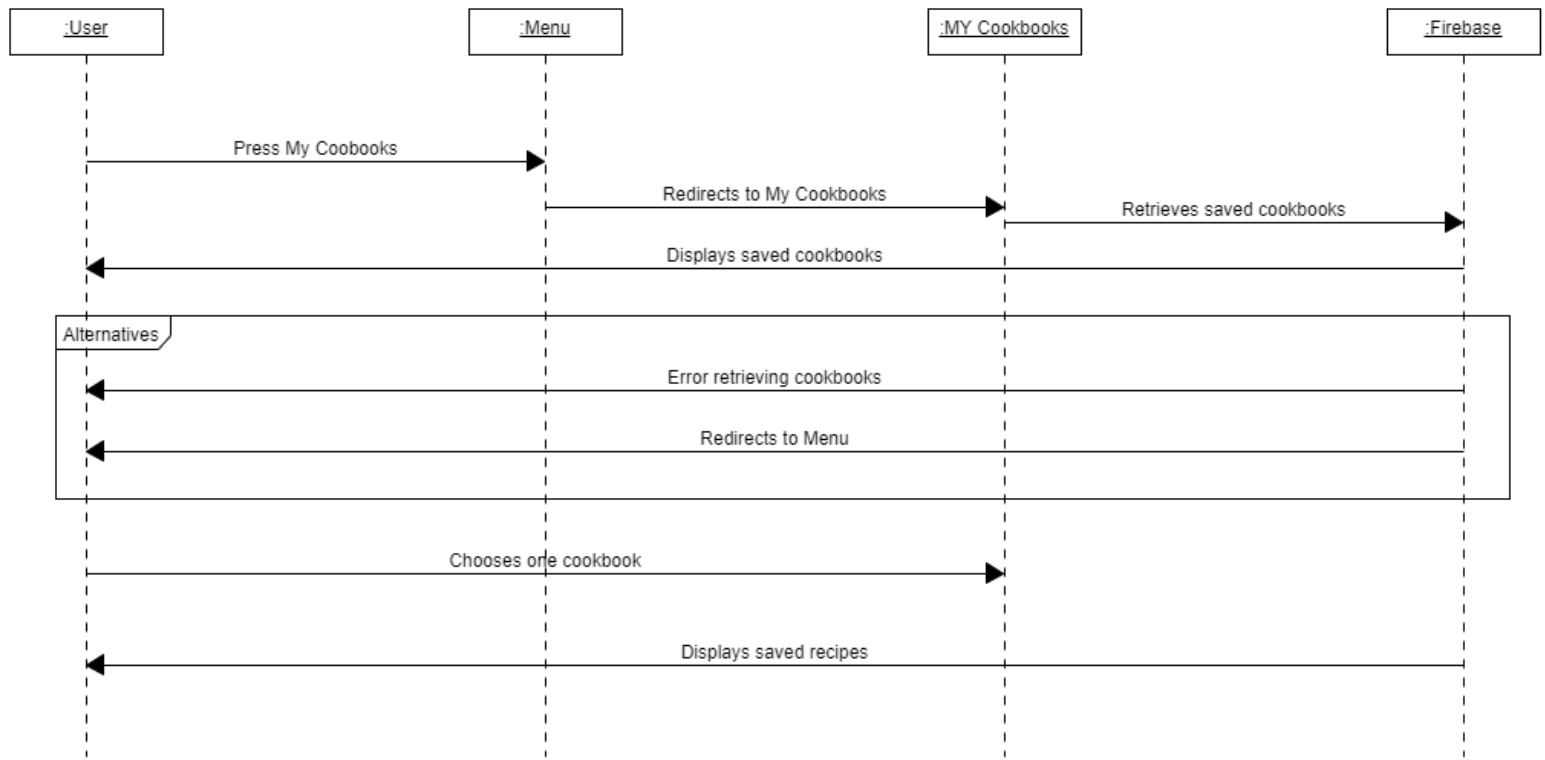


# CRUD Cookbook Sequence Diagram (Create)

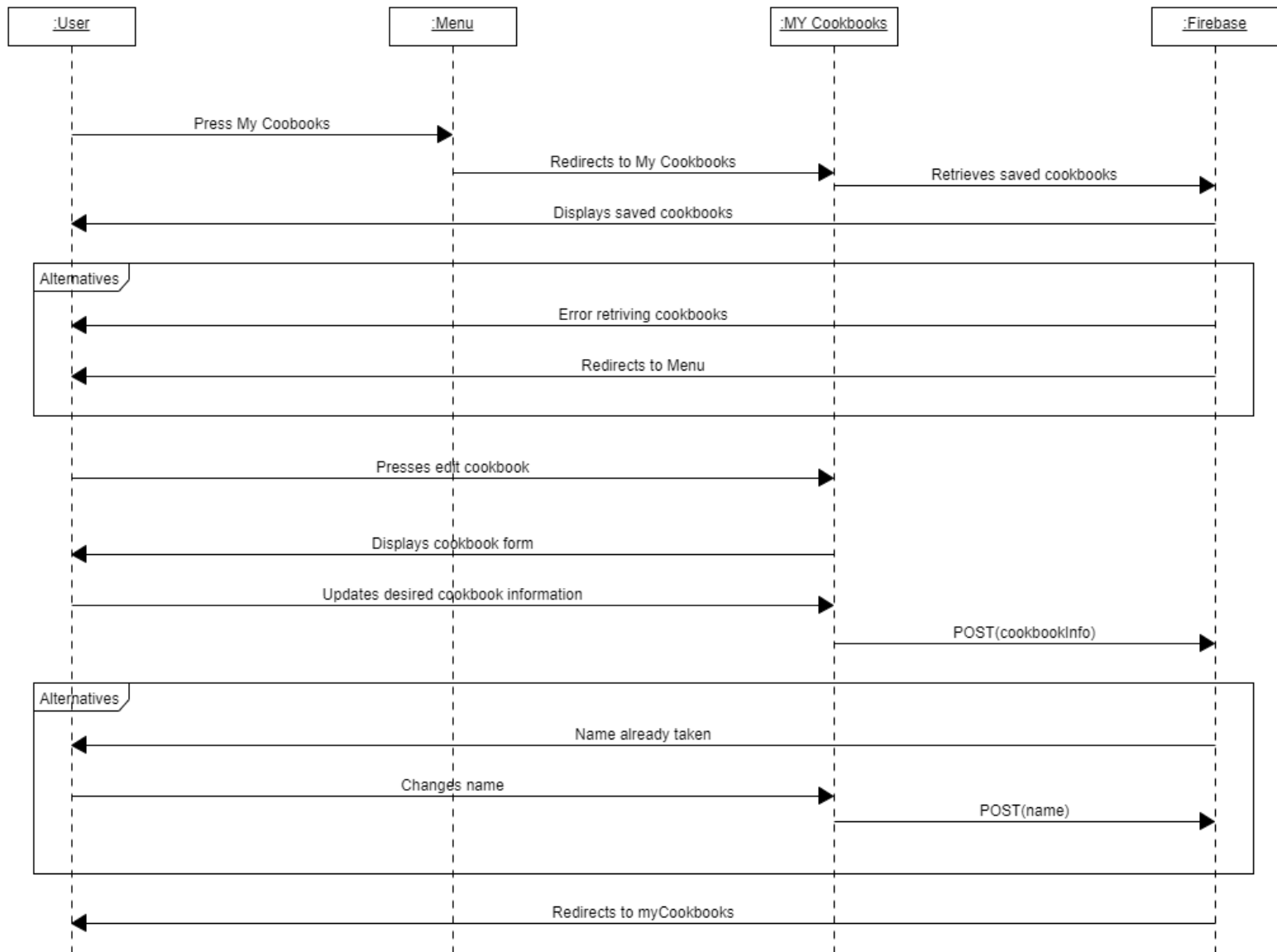




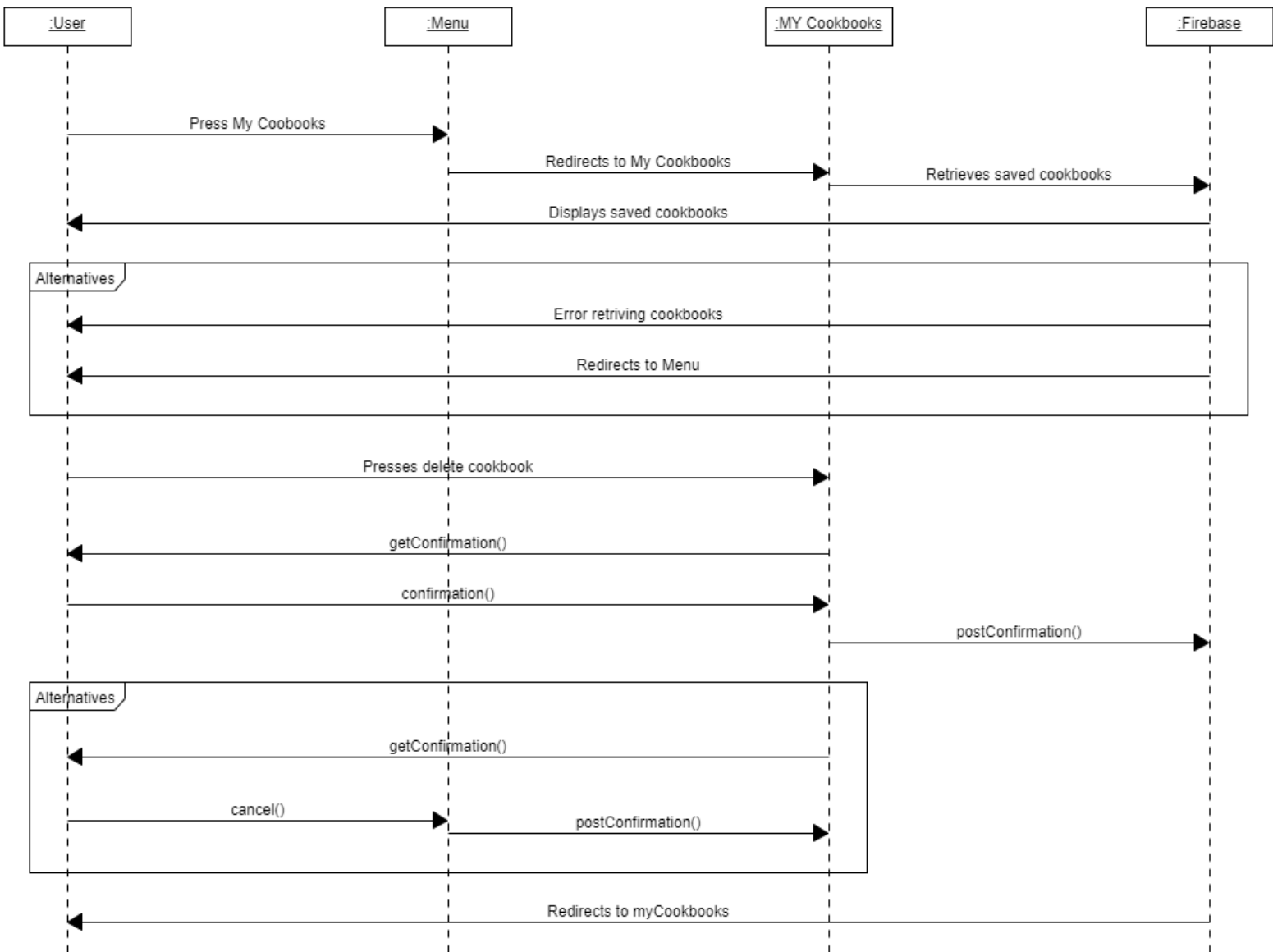
# CRUD Cookbook Sequence Diagram (Read/View)



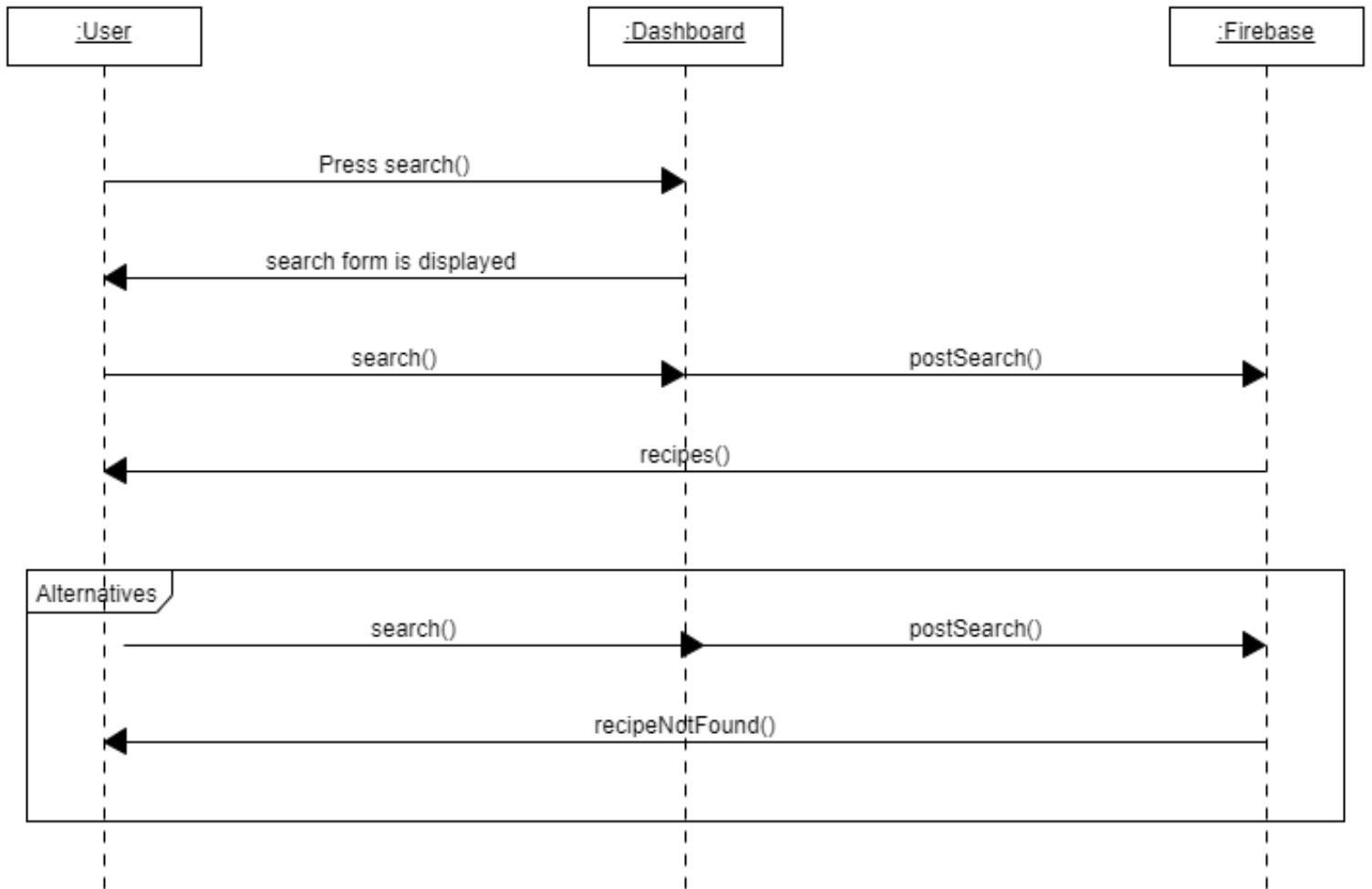
# CRUD Cookbook Sequence Diagram (Update)



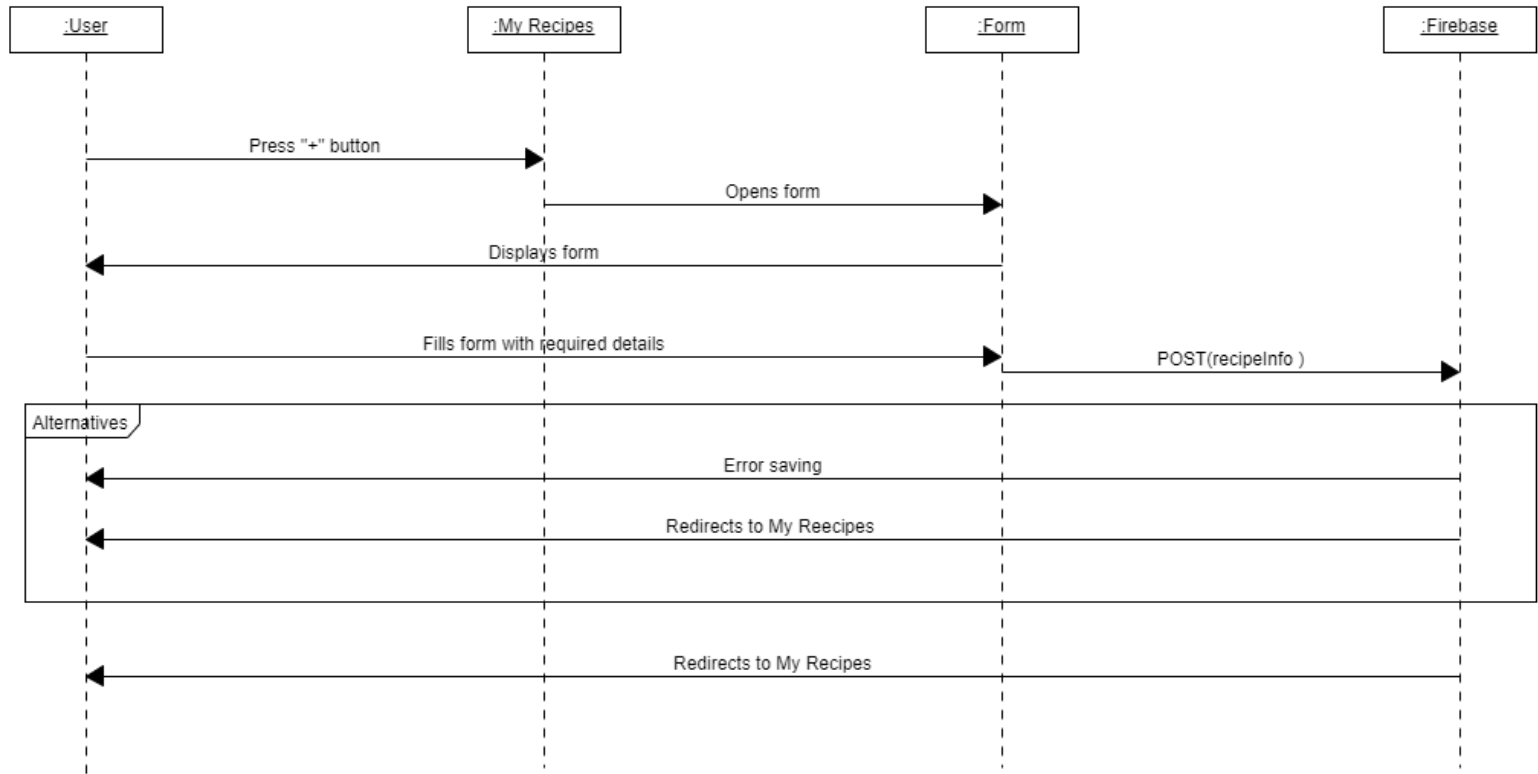
# CRUD Cookbook Sequence Diagram (Delete)



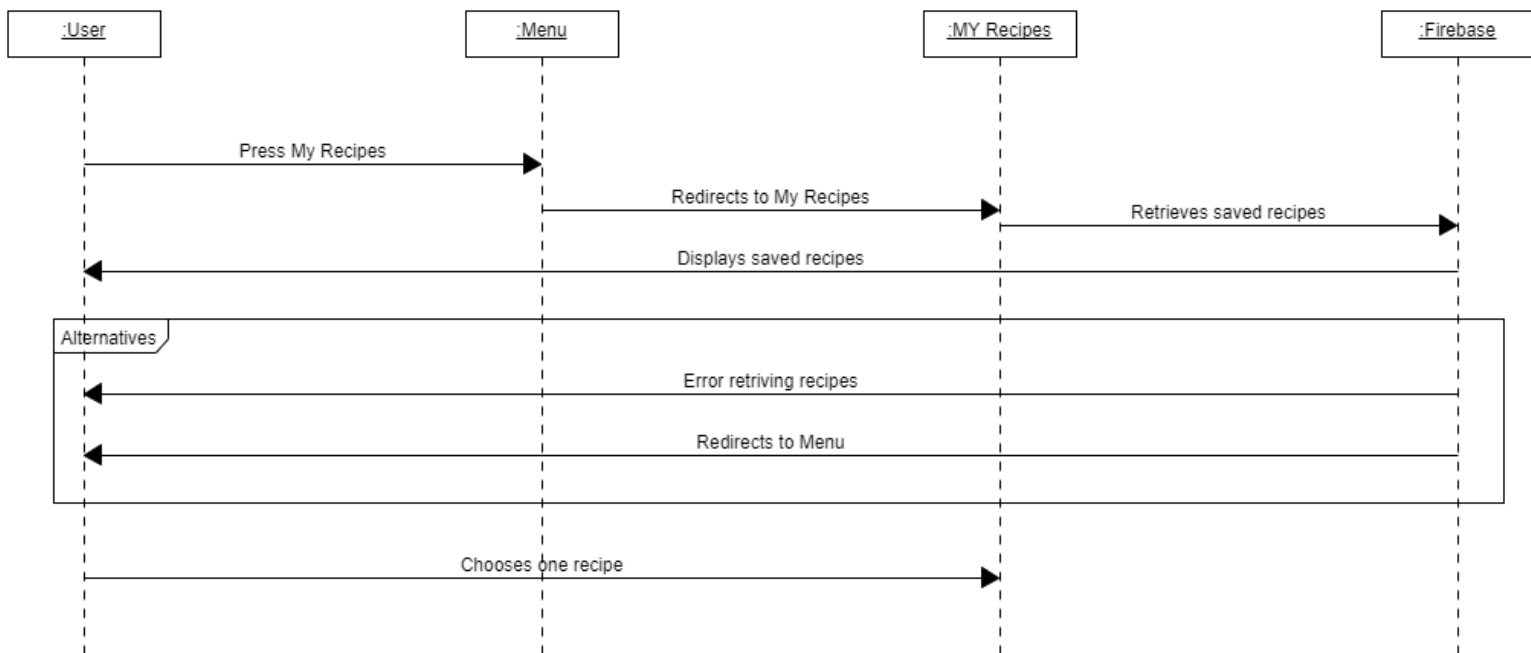
# Search Recipe Sequence Diagram



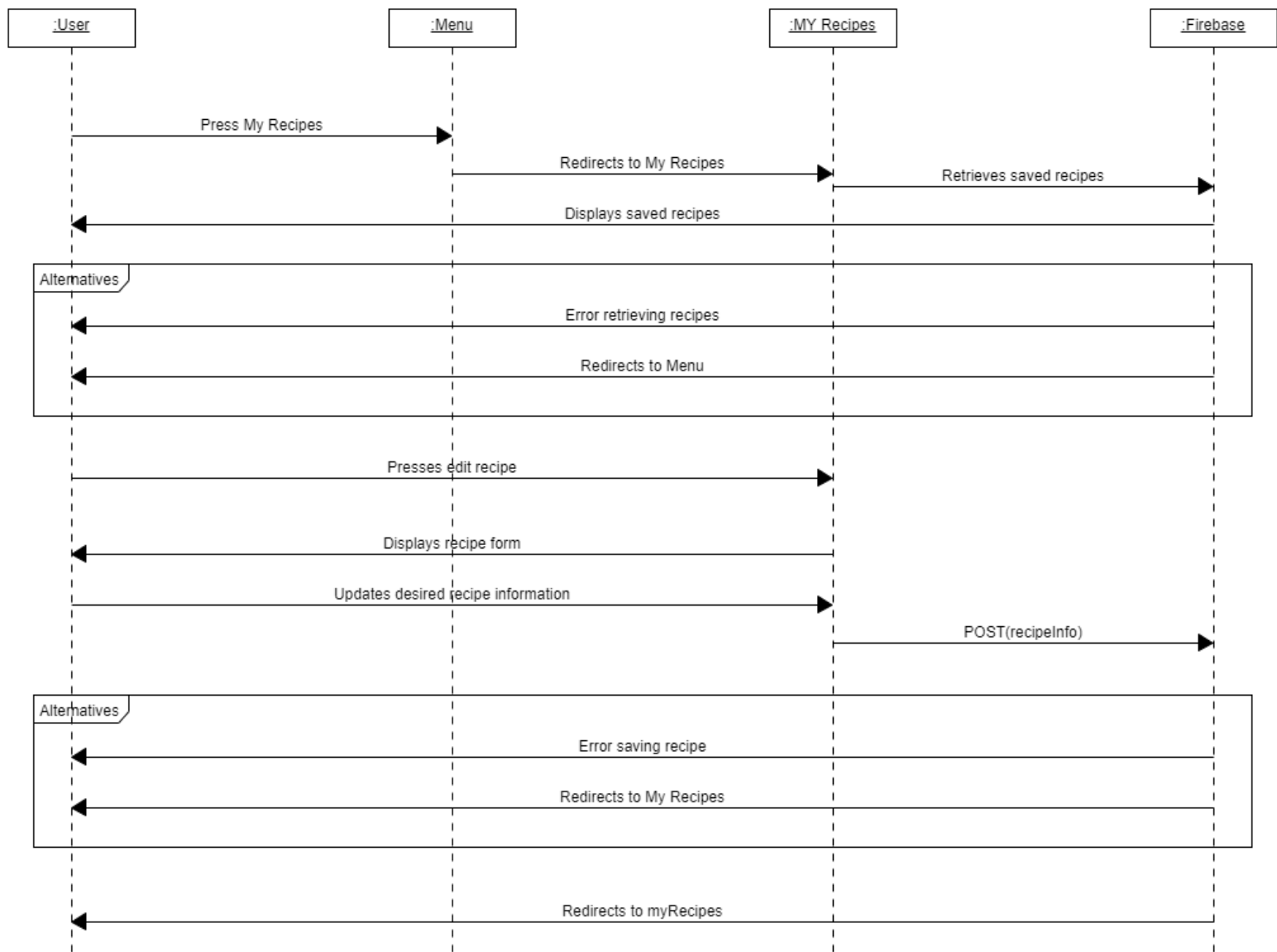
## CRUD Recipe Sequence Diagram (Create)



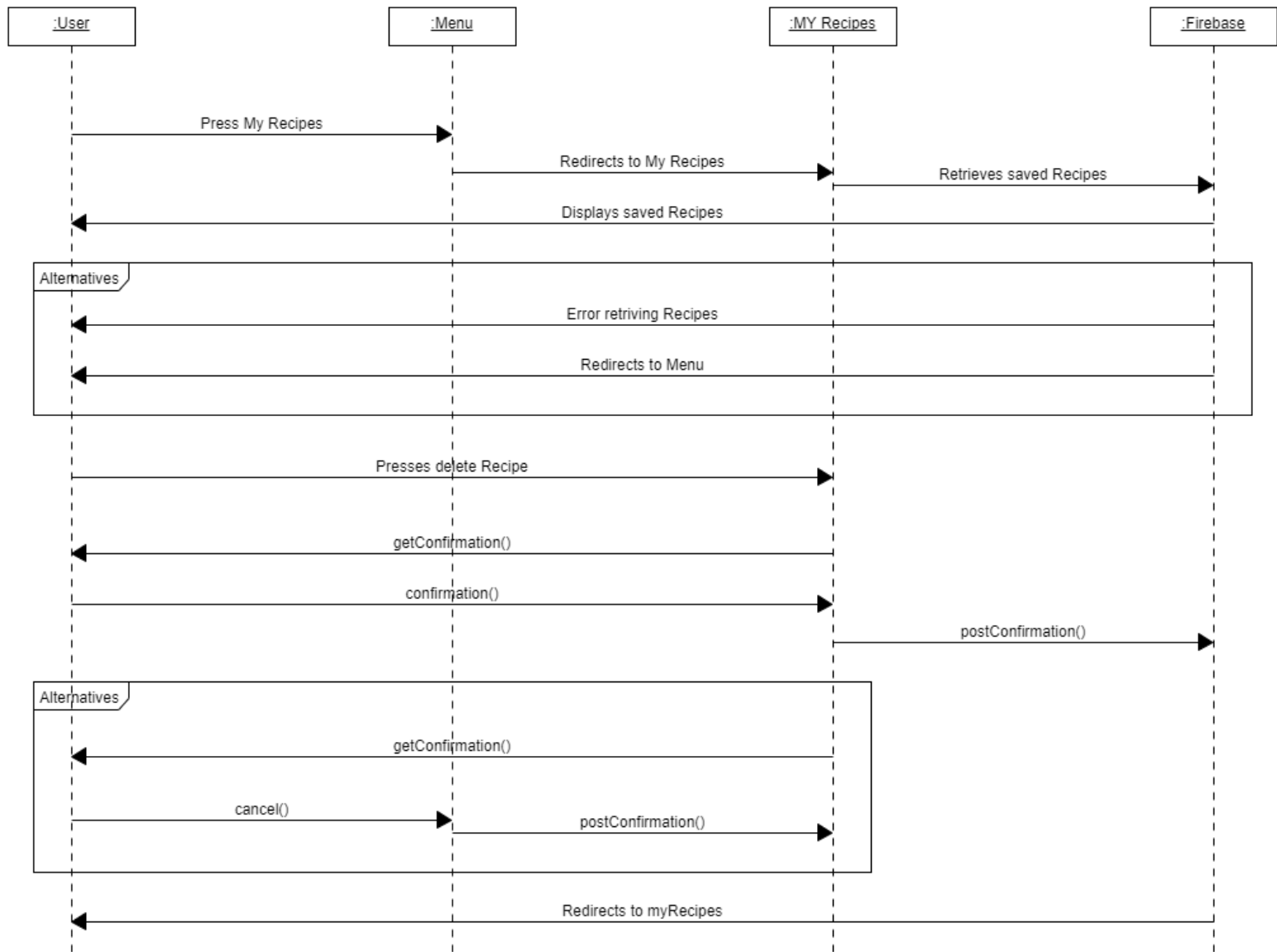
## CRUD Recipe Sequence Diagram (Read/View)



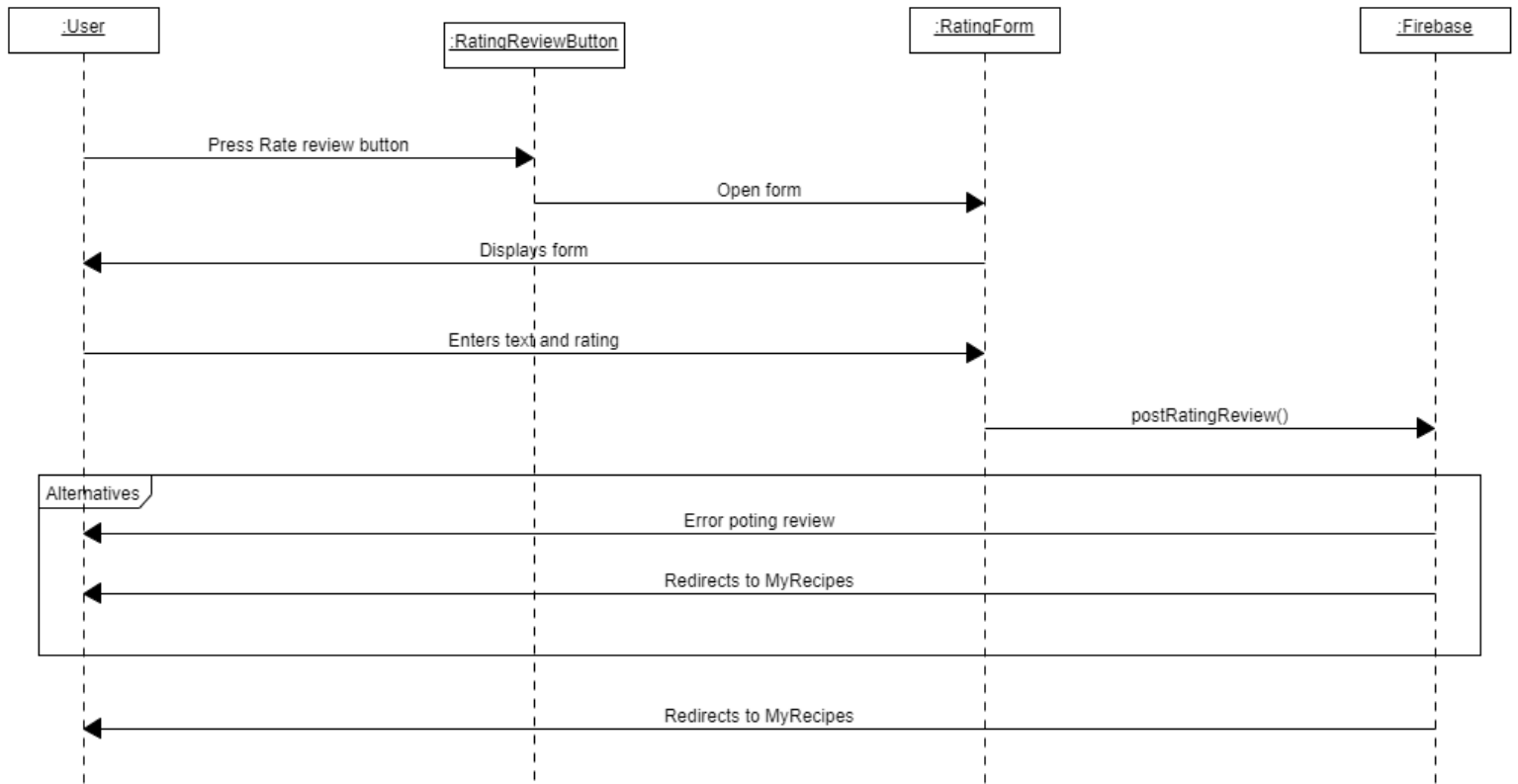
# CRUD Recipe Sequence Diagram (Update)



## CRUD Recipe Sequence Diagram (Delete)

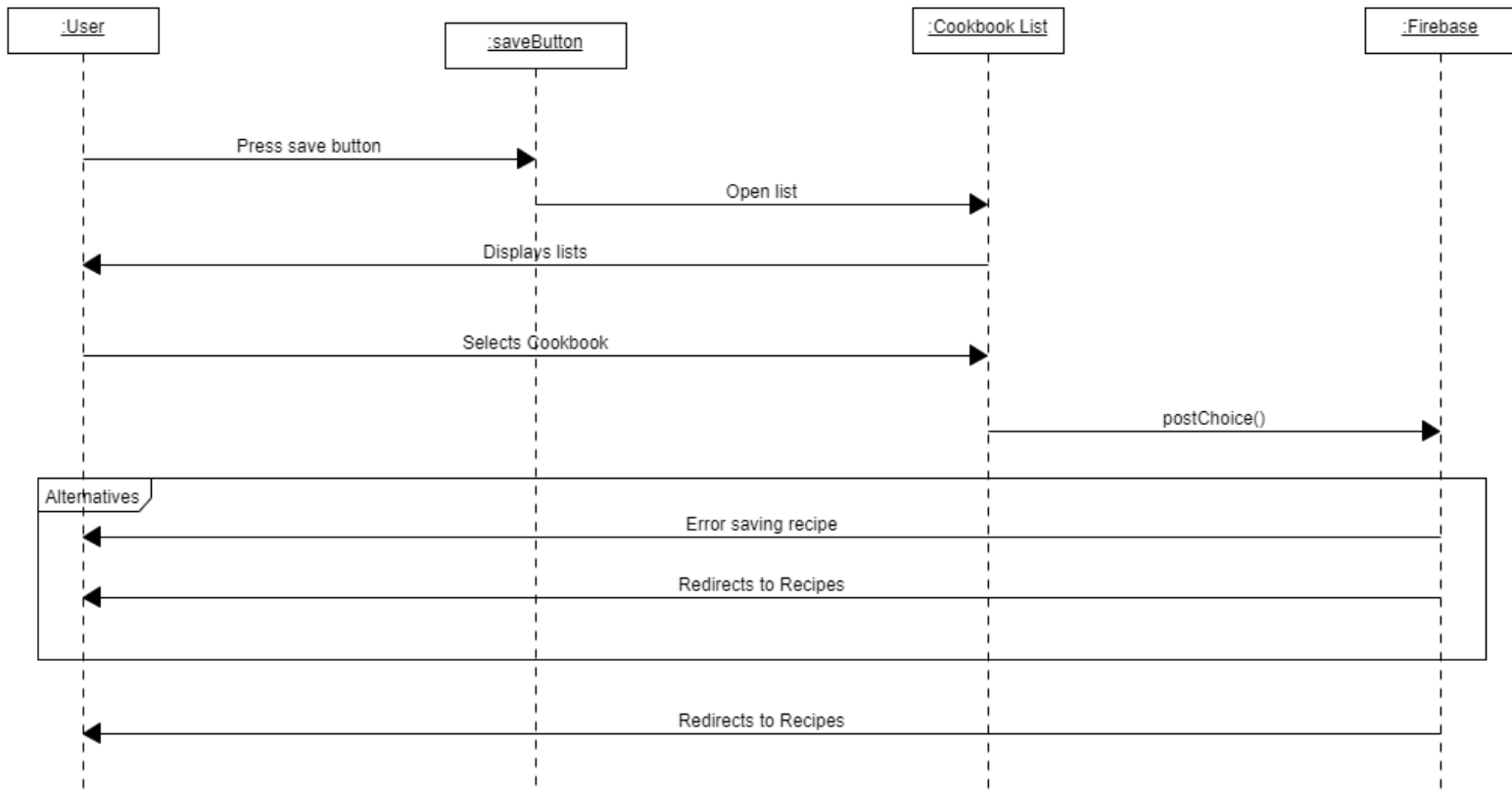


# Rate Recipe Sequence Diagram

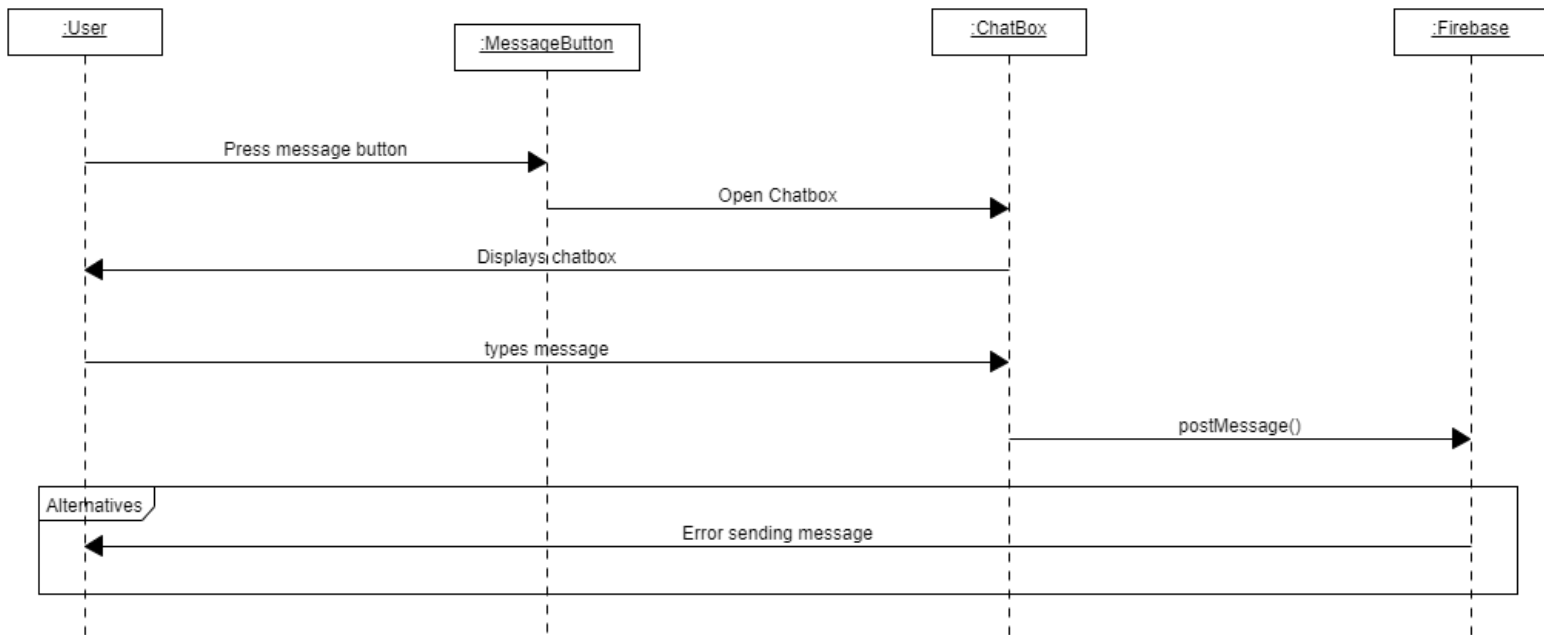




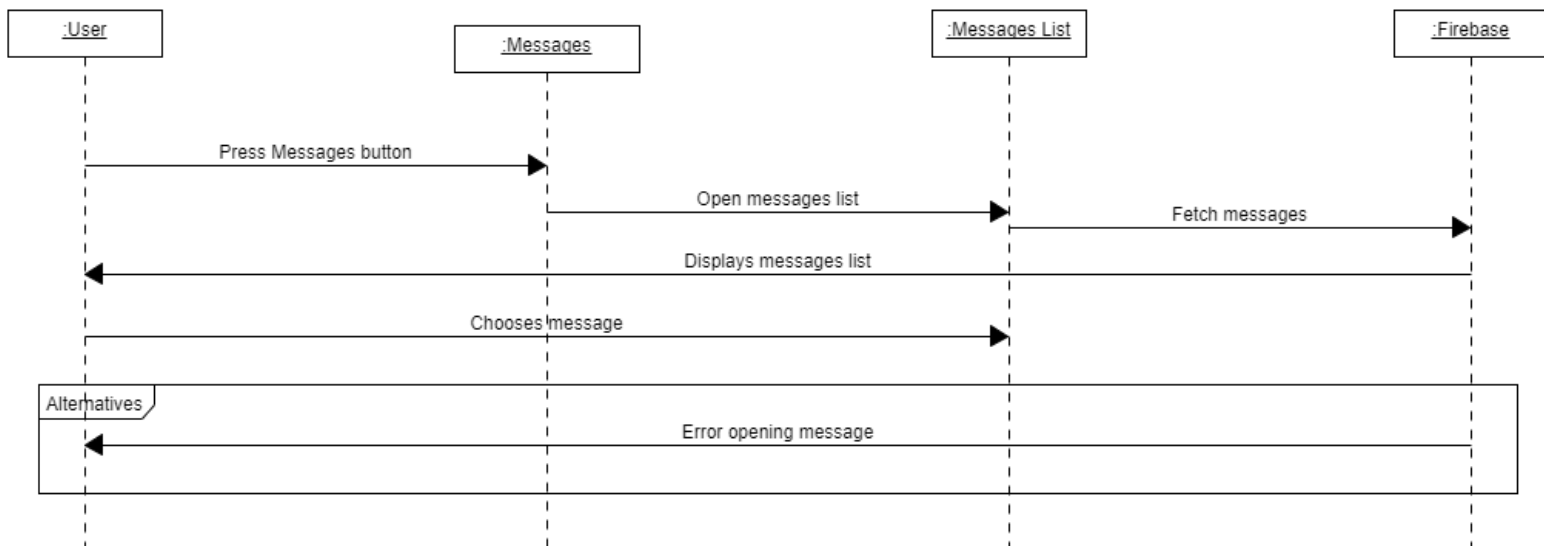
# Save Recipe to Cookbook Sequence Diagram



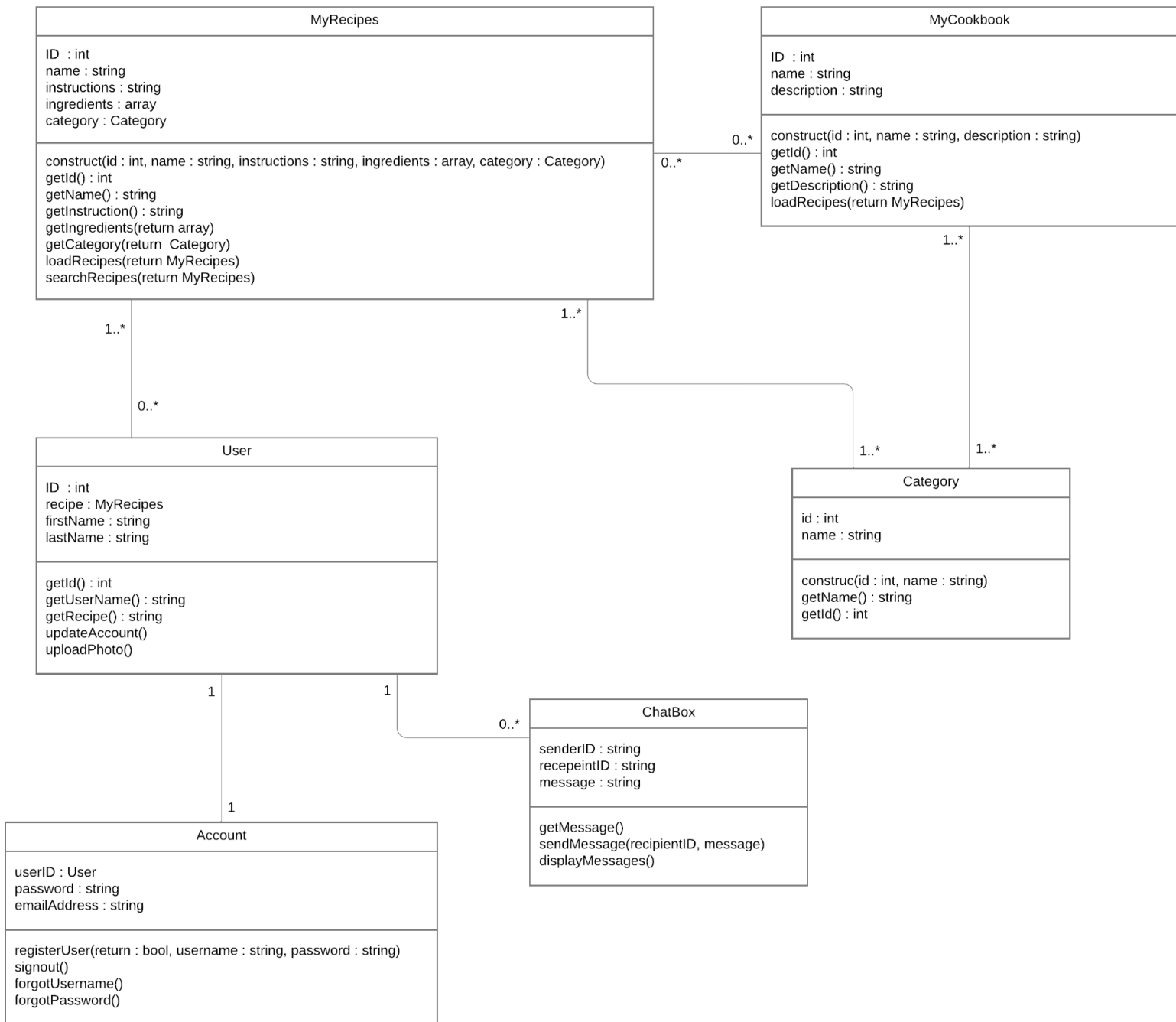
## Start Private Message Sequence Diagram



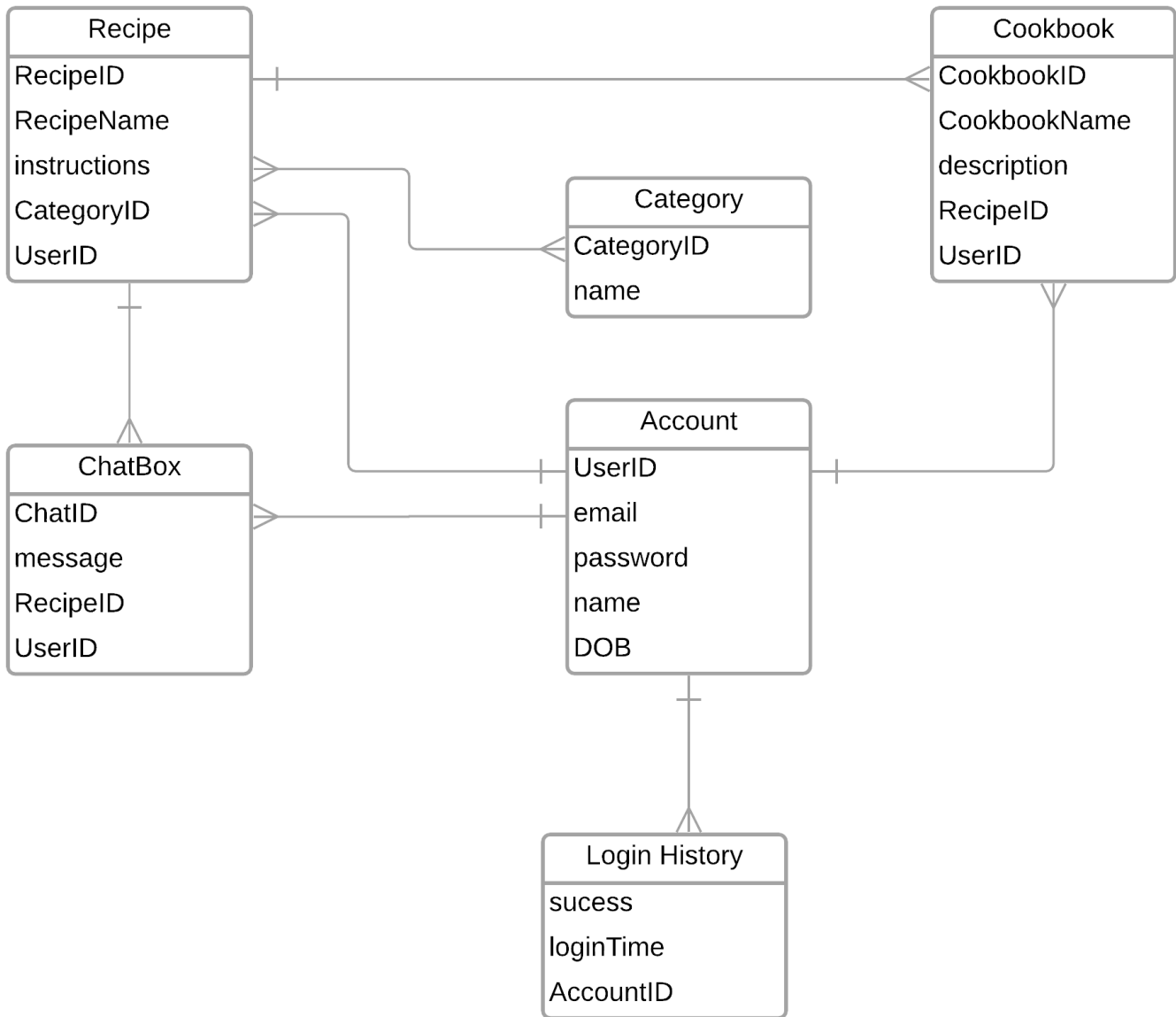
## Open Private Message Sequence Diagram



# Class Diagrams

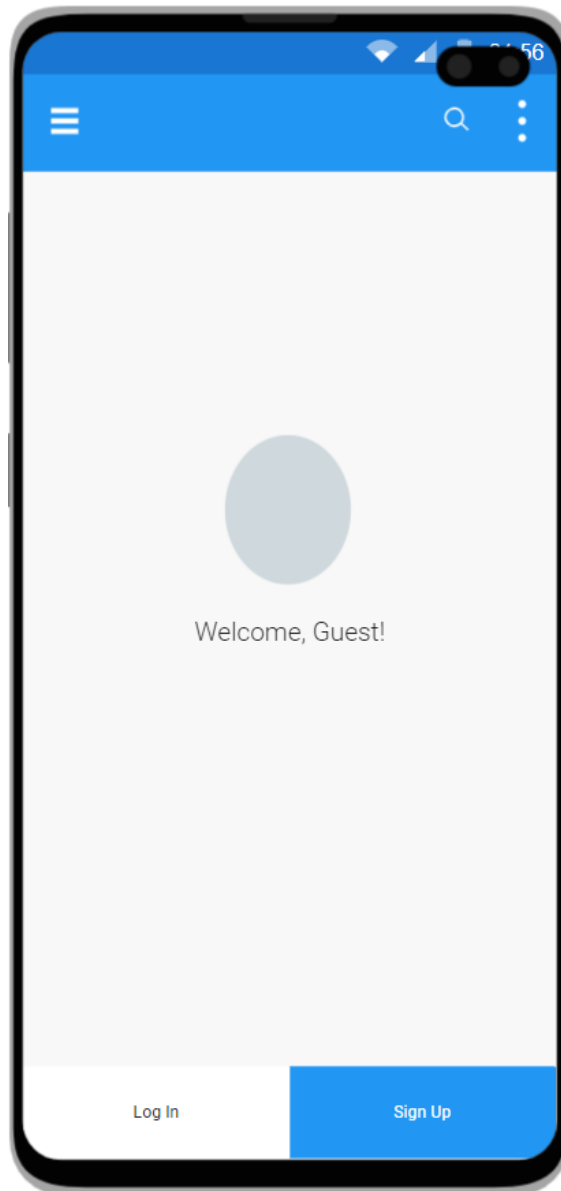


# Entity Relationship Diagram



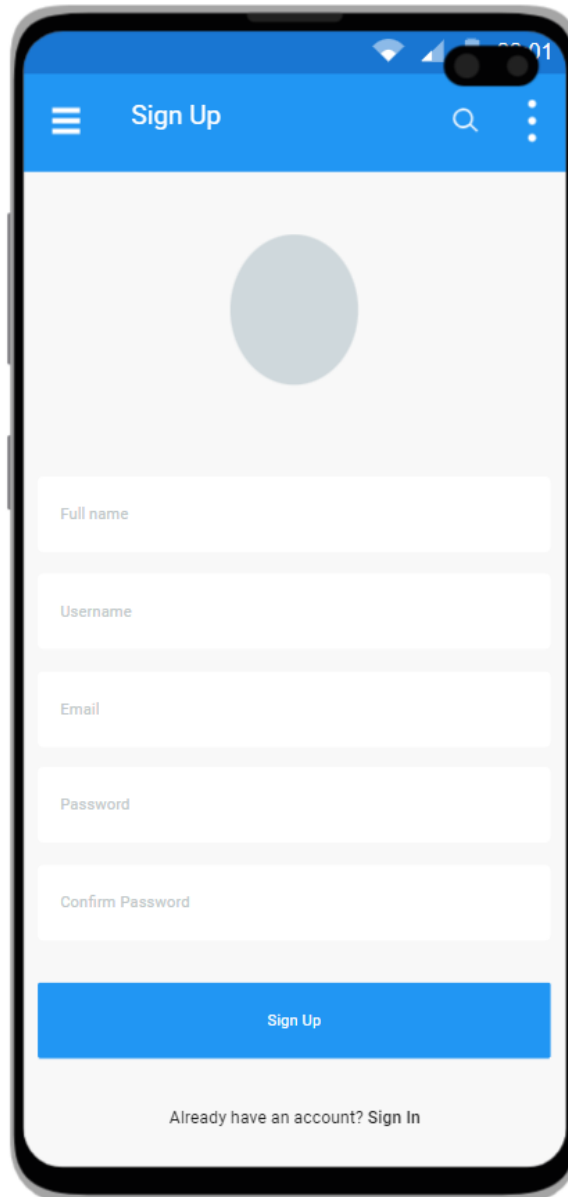
# GUI Design

## Main Screen



This is the screen of when a user first opens the application. A user can sign up or log in if he/she has an account.

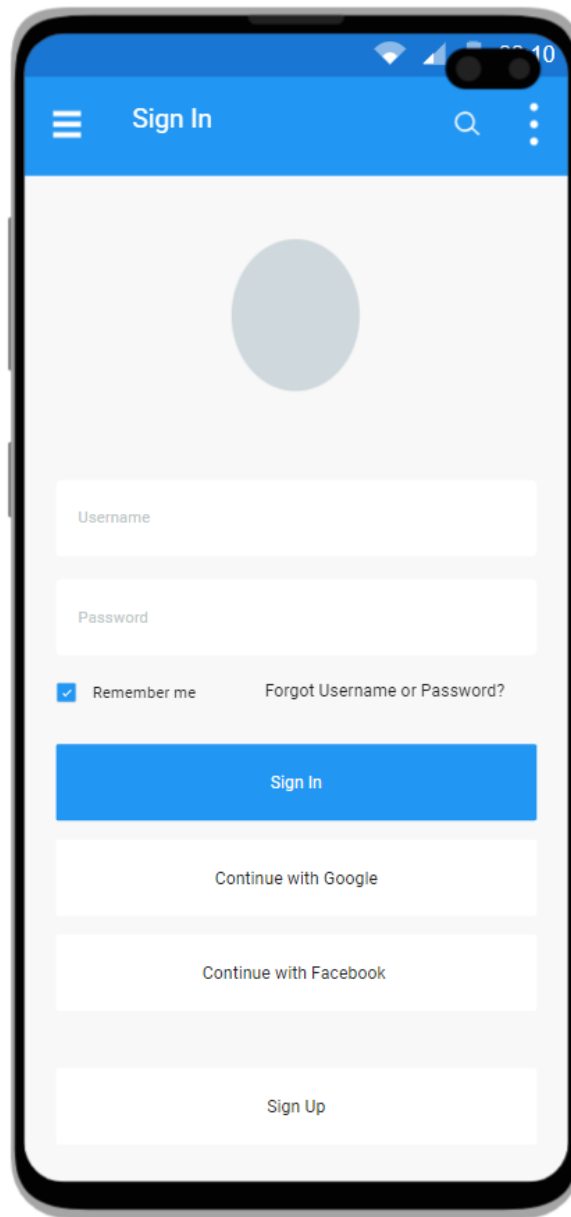
## Sign Up Screen



The image shows a mobile application interface for a sign-up screen. At the top, there is a blue header bar with a white hamburger menu icon on the left, the text "Sign Up" in the center, and a white magnifying glass icon and a white three-dot menu icon on the right. Below the header is a large grey circle representing a profile picture placeholder. Underneath the placeholder are five white input fields with grey placeholder text: "Full name", "Username", "Email", "Password", and "Confirm Password". At the bottom of the form is a prominent blue button with the white text "Sign Up". Below the button, centered, is the text "Already have an account? Sign In". The entire screen is framed by a black border representing the phone's bezel.

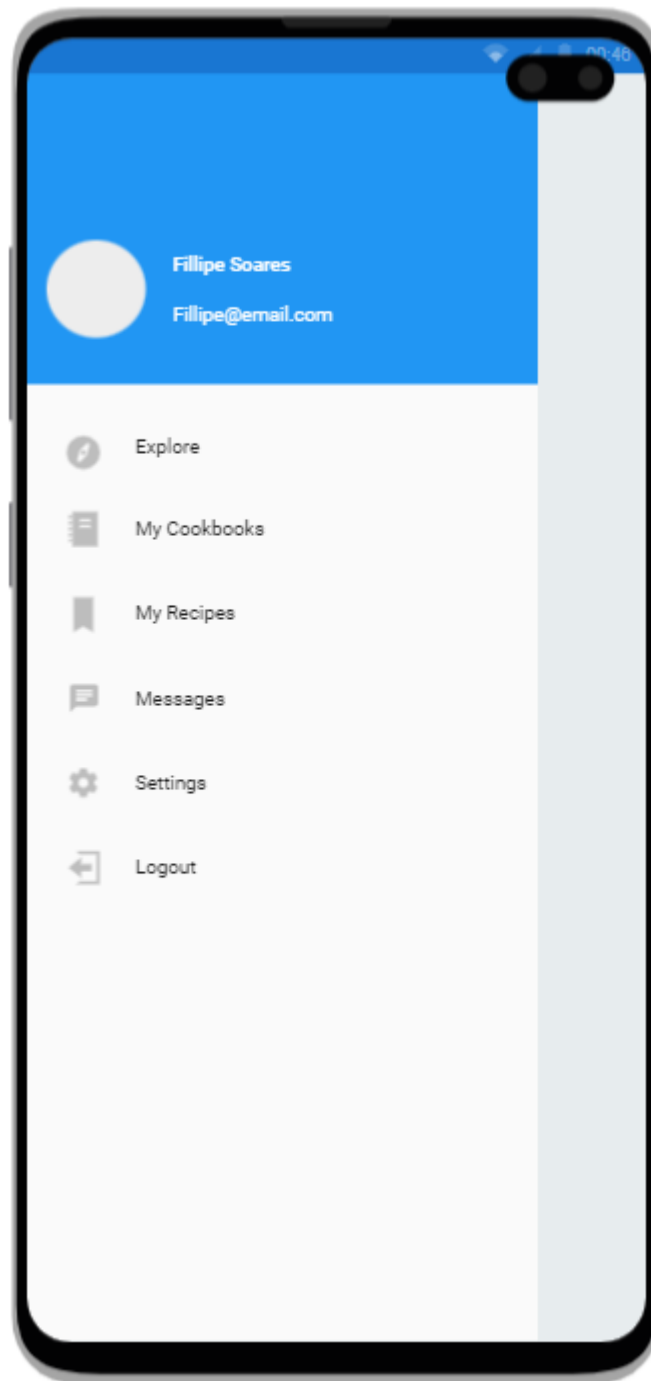
This is the screen for when a user is creating an account. A user fills out the form and presses "Sign Up" then the user is redirected to the login page.

## Login Screen



This is the screen for when a user wants to log in. A user can log in with his/hers username and password or they can log in with a Google or Facebook account.

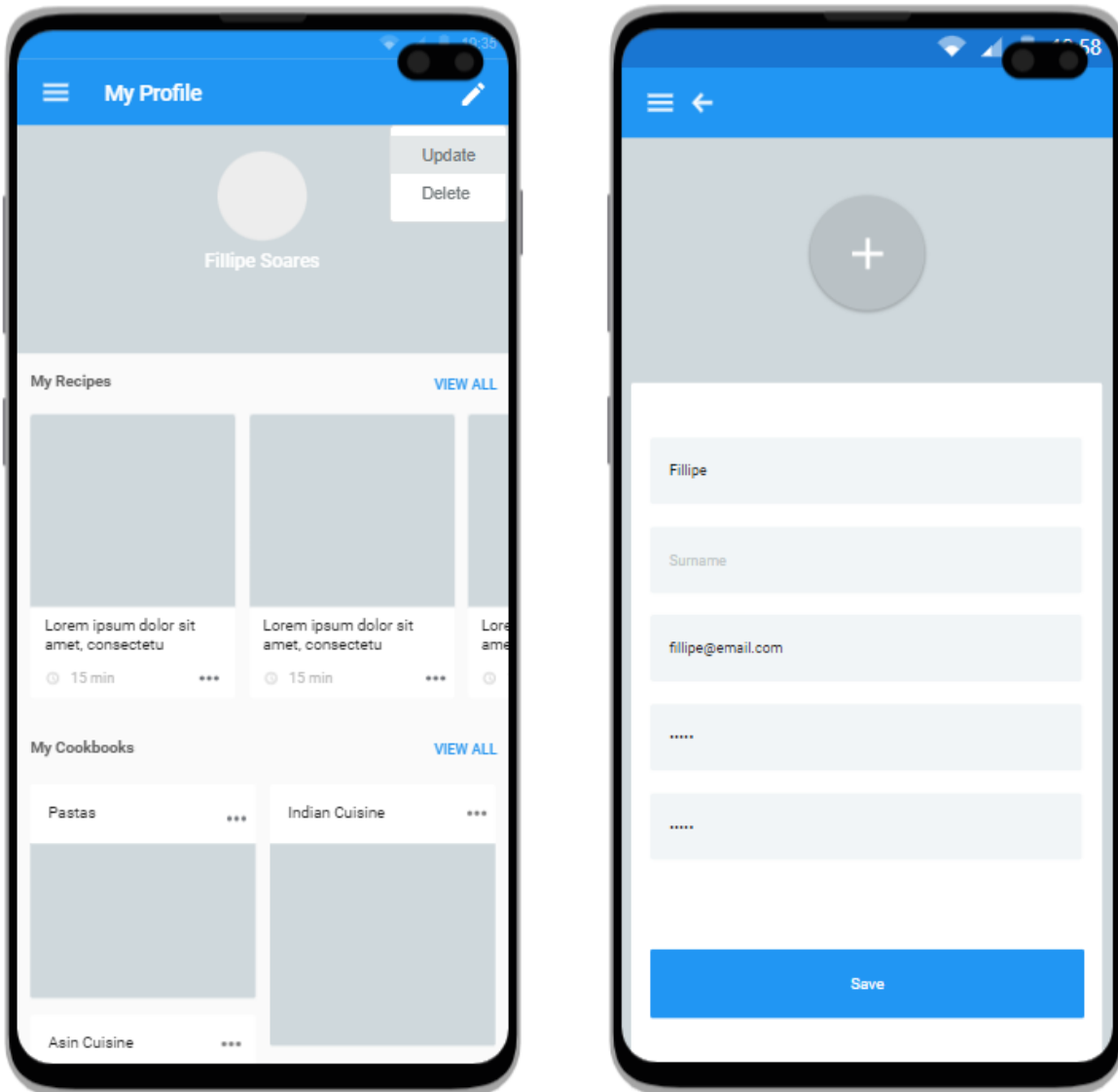
## Menu Screen



This is the screen for the app menu. The menu opens when a user presses on the burger menu icon.

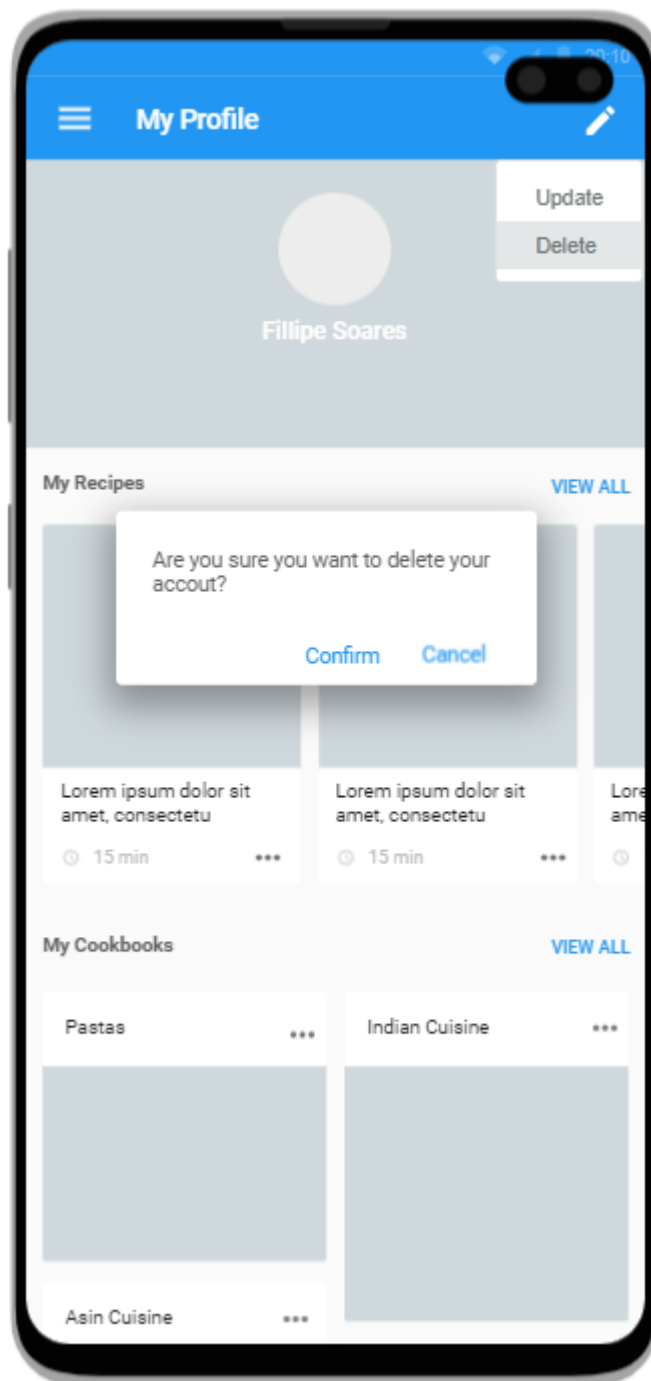


## Update Account Screen



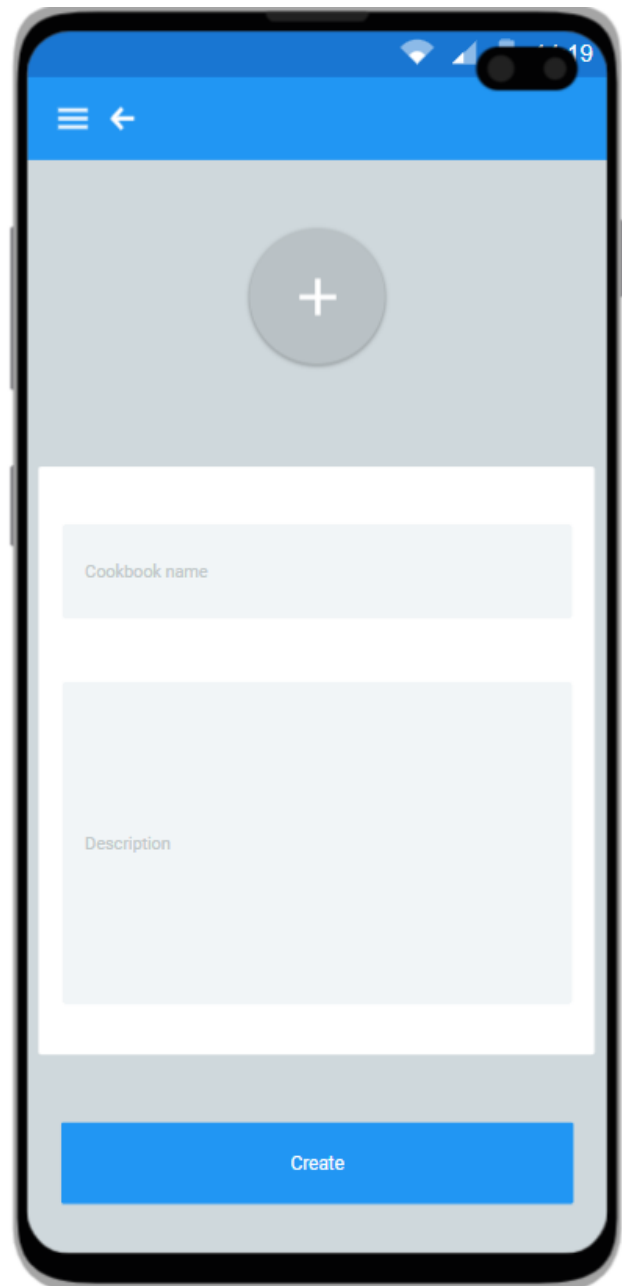
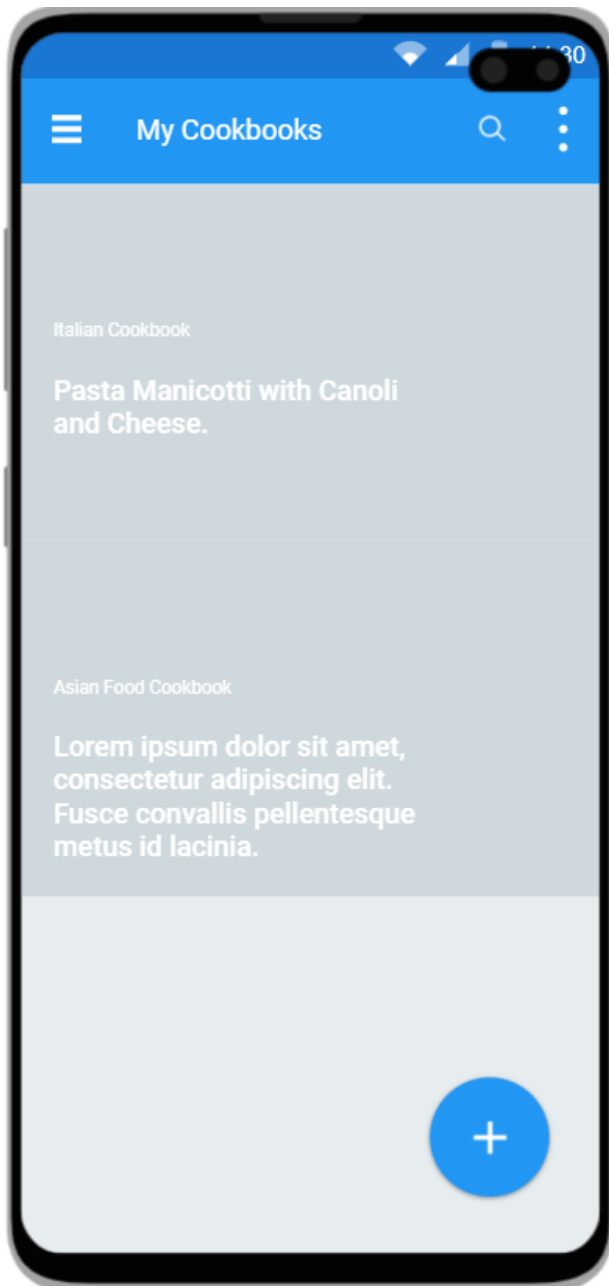
These are the screens for when a user wants to update account information.

## Delete Account Screen



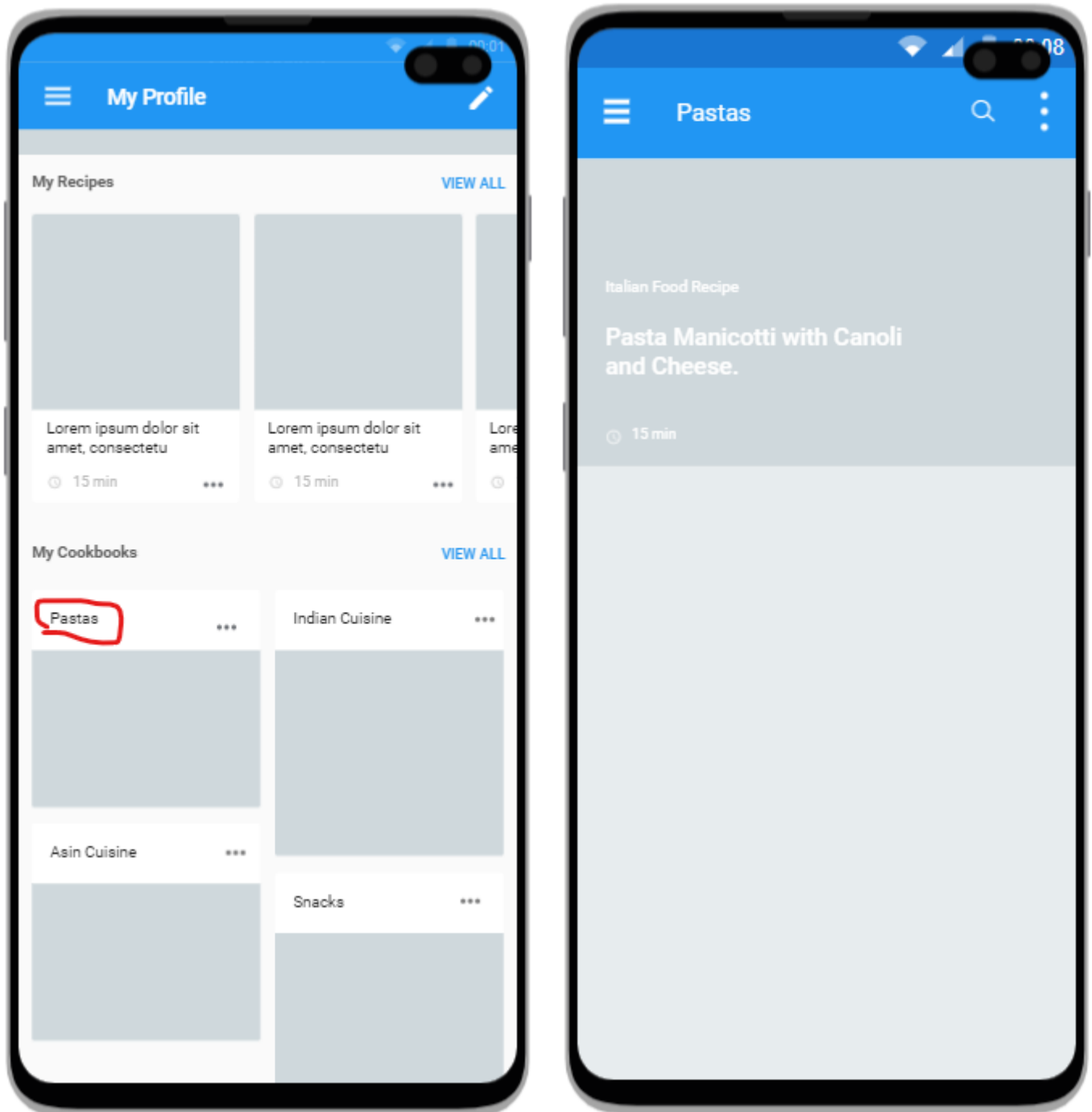
This is the screen for when the user wishes to delete the account.

## Create Cookbook Screen



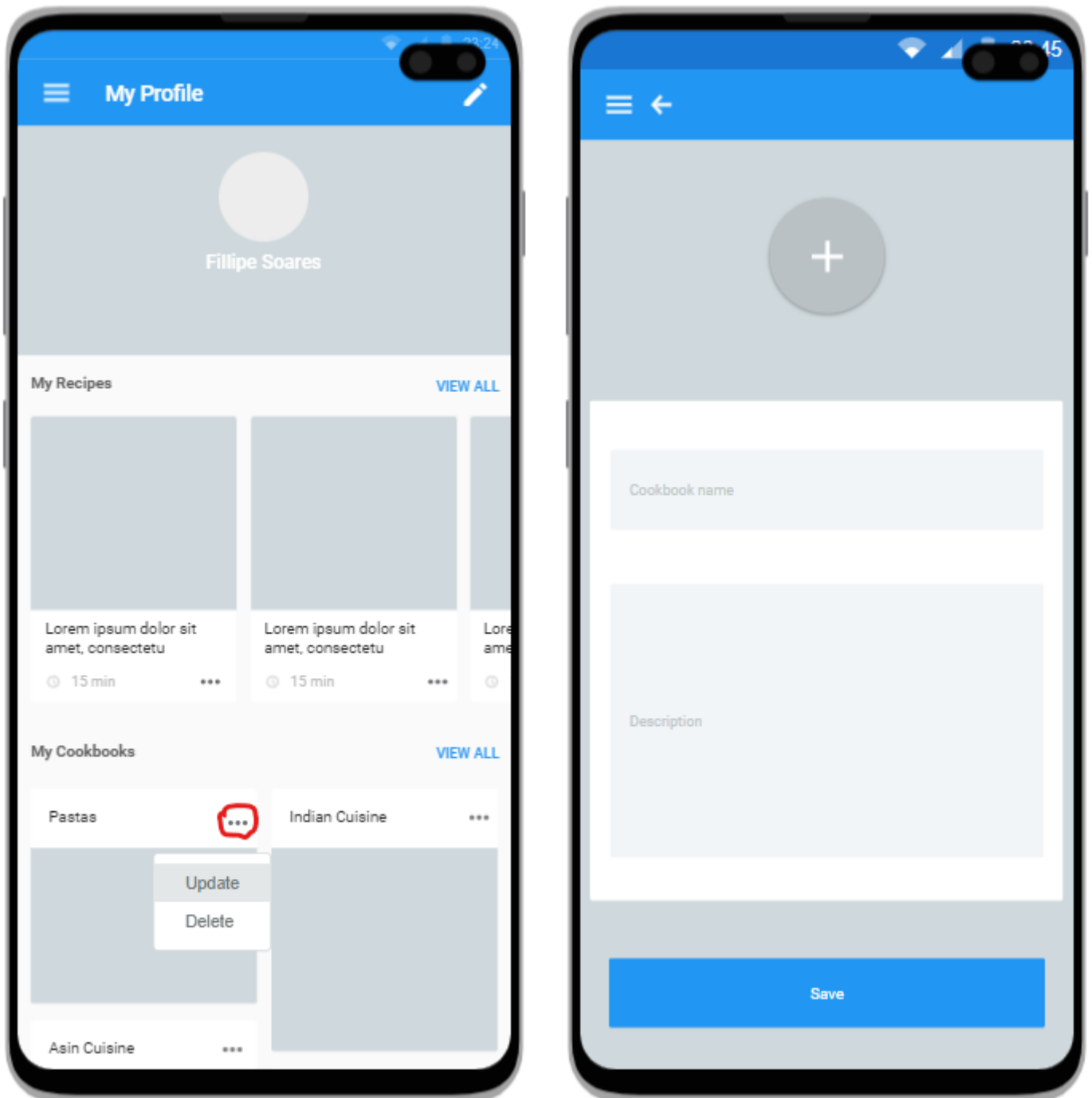
These are the screen for when a user wishes to create a new cookbook. The user can do so by pressing the plus icon at the bottom of the screen.

## View Cookbook Screen



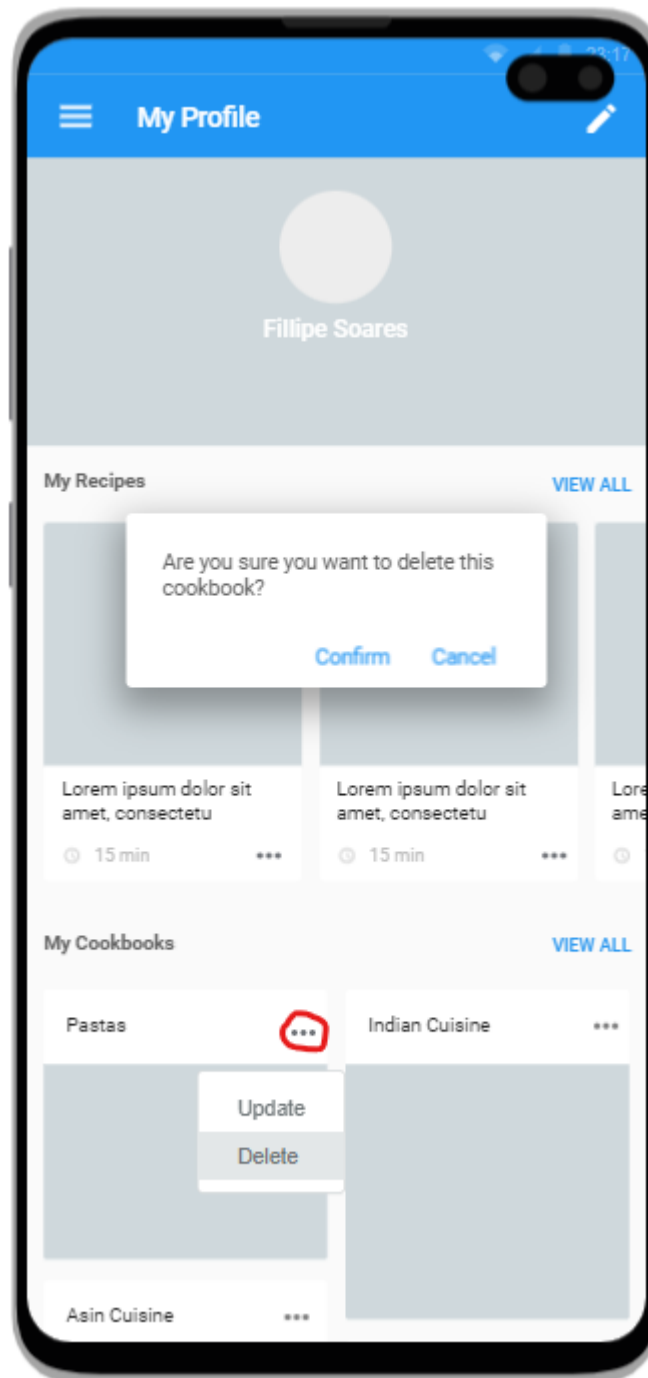
This is the screens for when a user chooses a cookbook. Once a user picks a cookbook he/she is presented with all recipes saved to that cookbook.

## Update Cookbook Screen



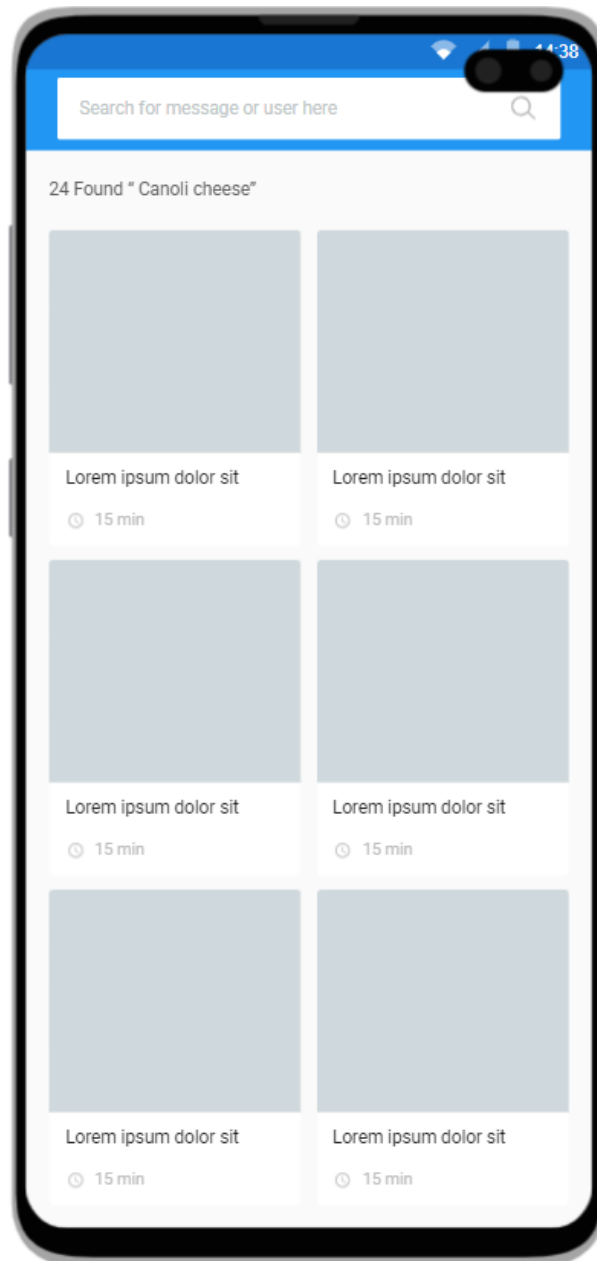
These are the screens for a user who wishes to update details for a cookbook.

## Delete Cookbook Screen



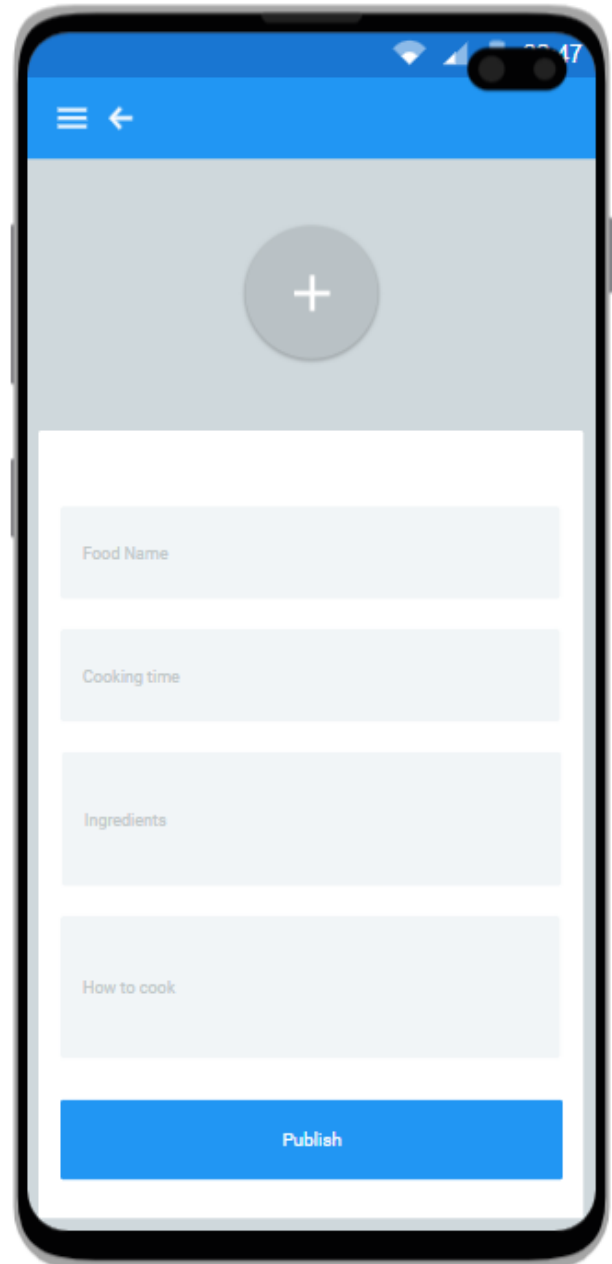
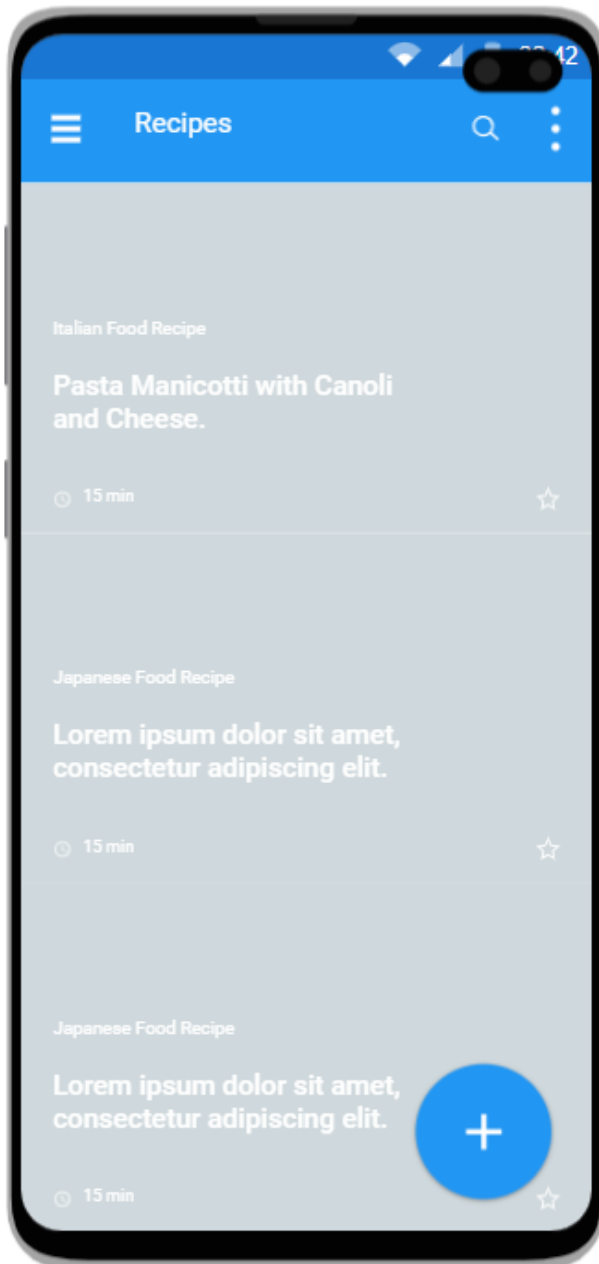
This is the screen for when a user wishes to delete a cookbook.

## Search Recipe Screen



This is the screen for when a user wishes to search for a recipe. The user can search for recipes by typing in an ingredient or recipe name.

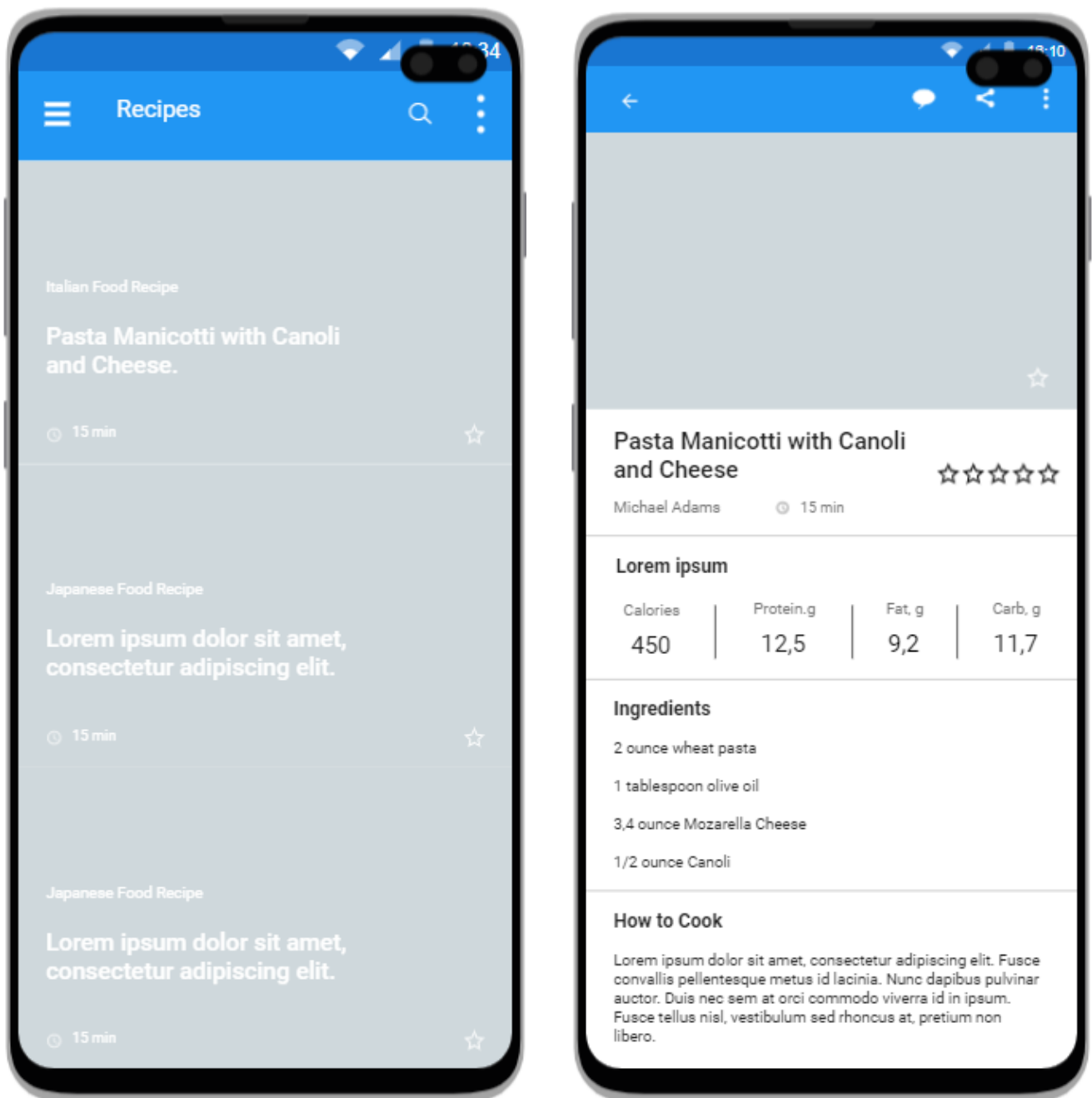
## Create Recipe Screen



This is the screens for when a user creates a new recipe.

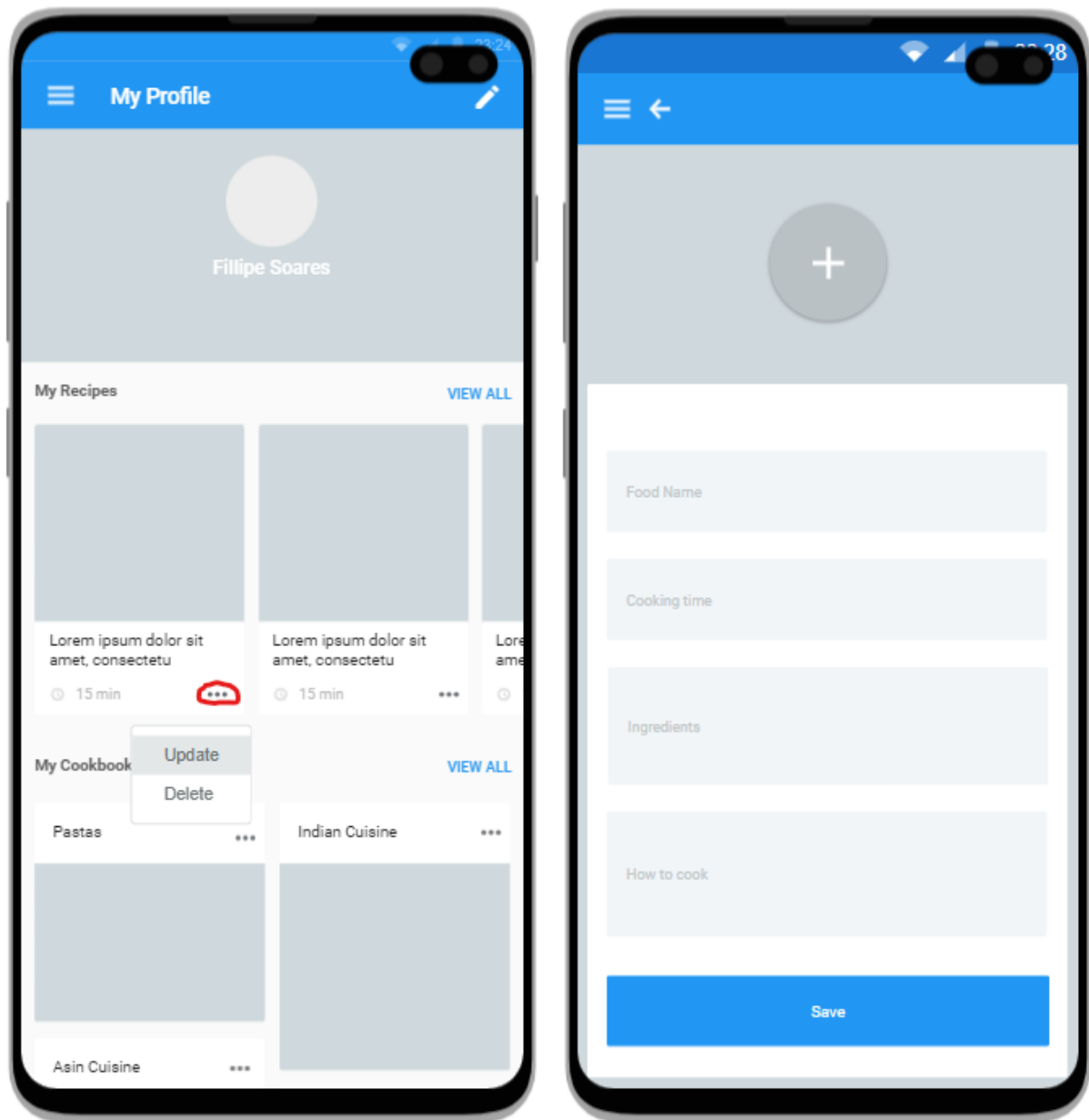


## View Recipe Screen



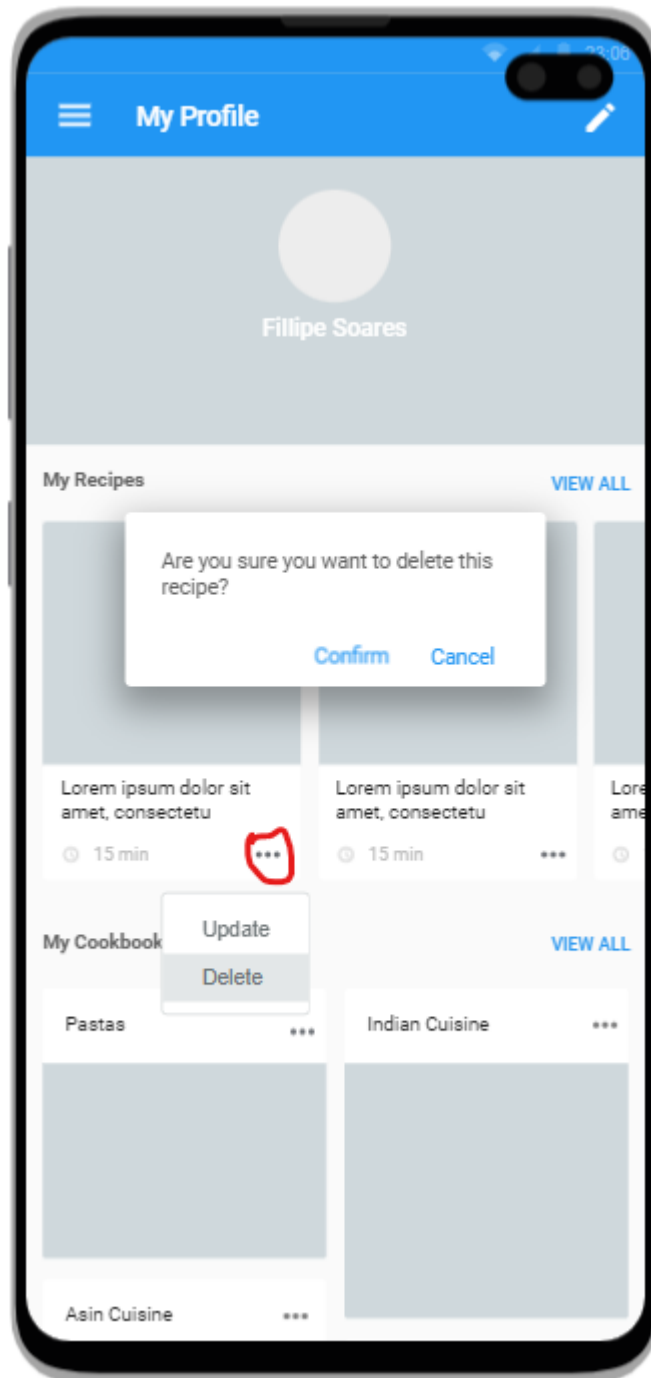
This is the screens showing when a user chooses to view a recipe.

## Update Recipe Screen



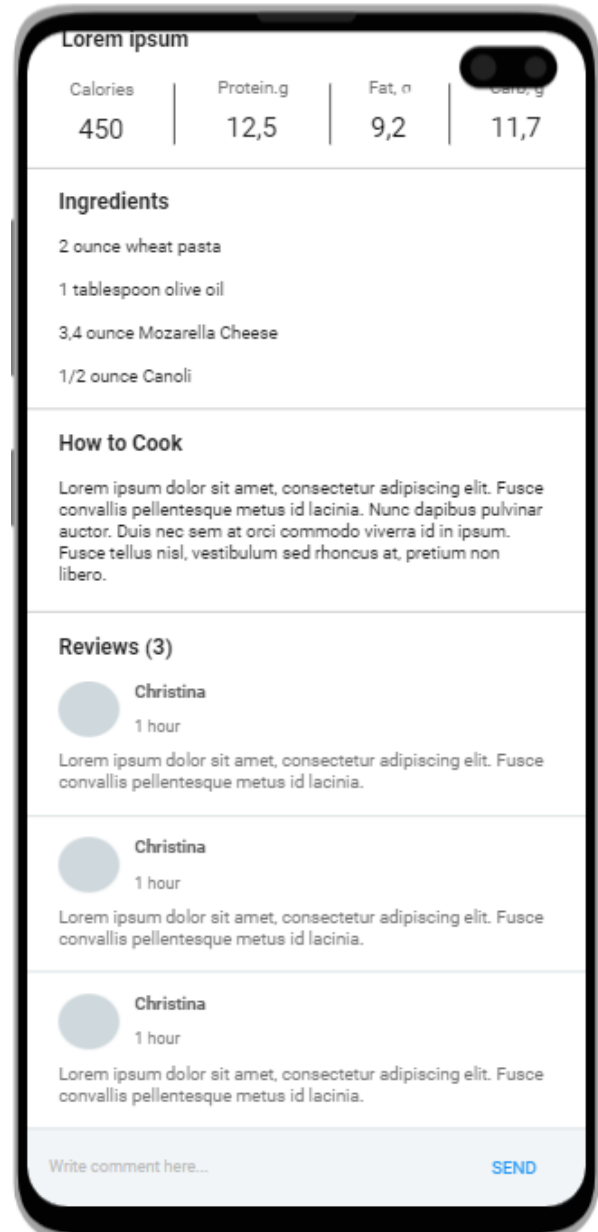
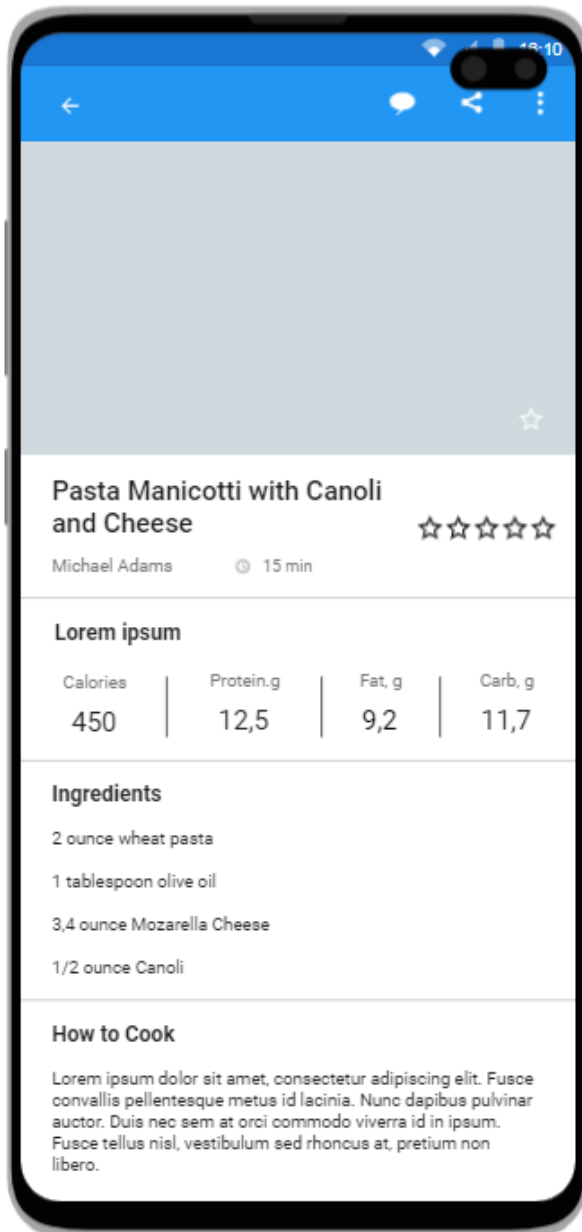
This is the screen for when a user wishes to update recipe details. A user can only update recipes that he/she created.

## Delete Recipe Screen



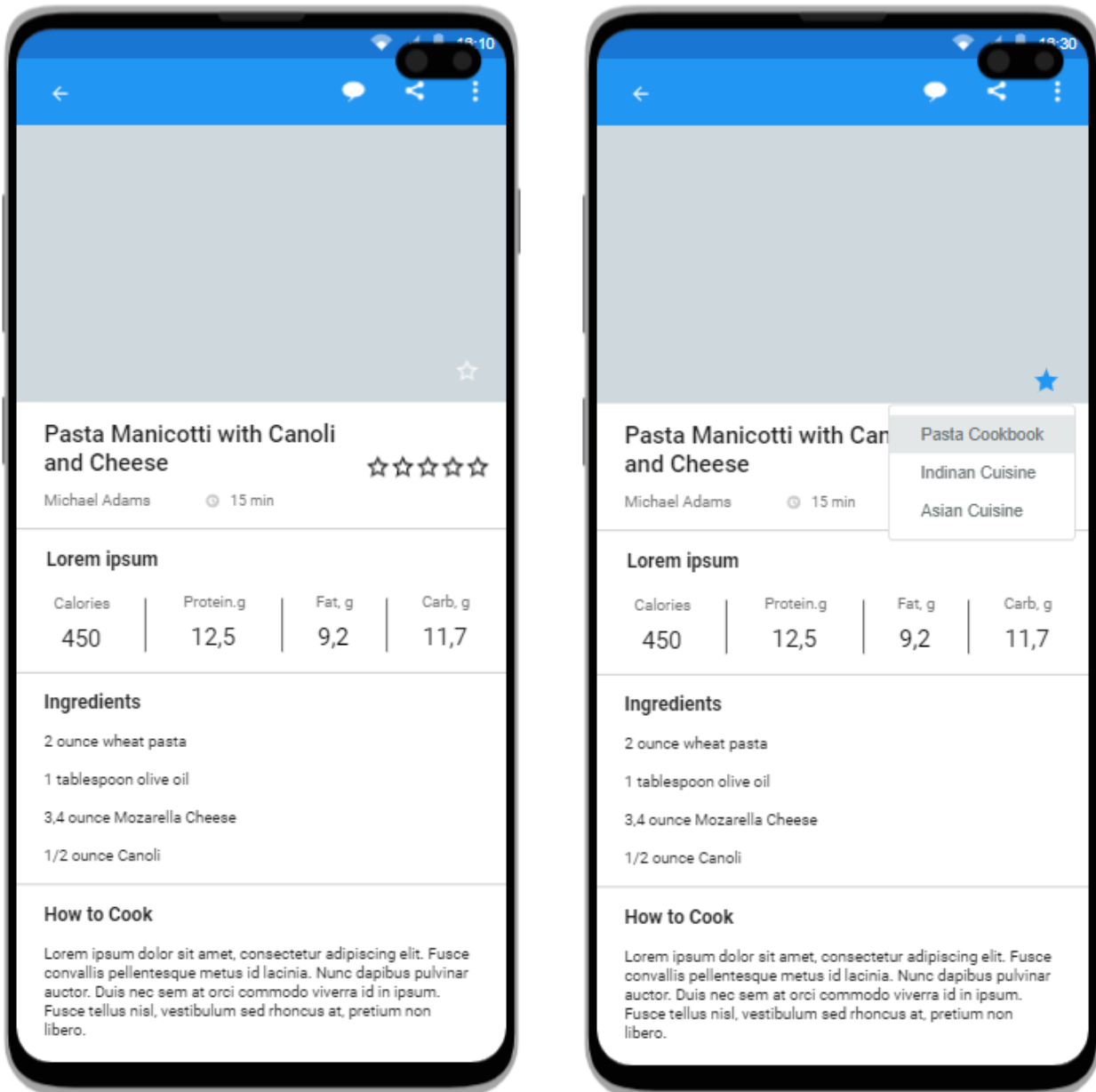
This is the screen for when a user wishes to delete a personal recipe.

## Rate Recipe Screen



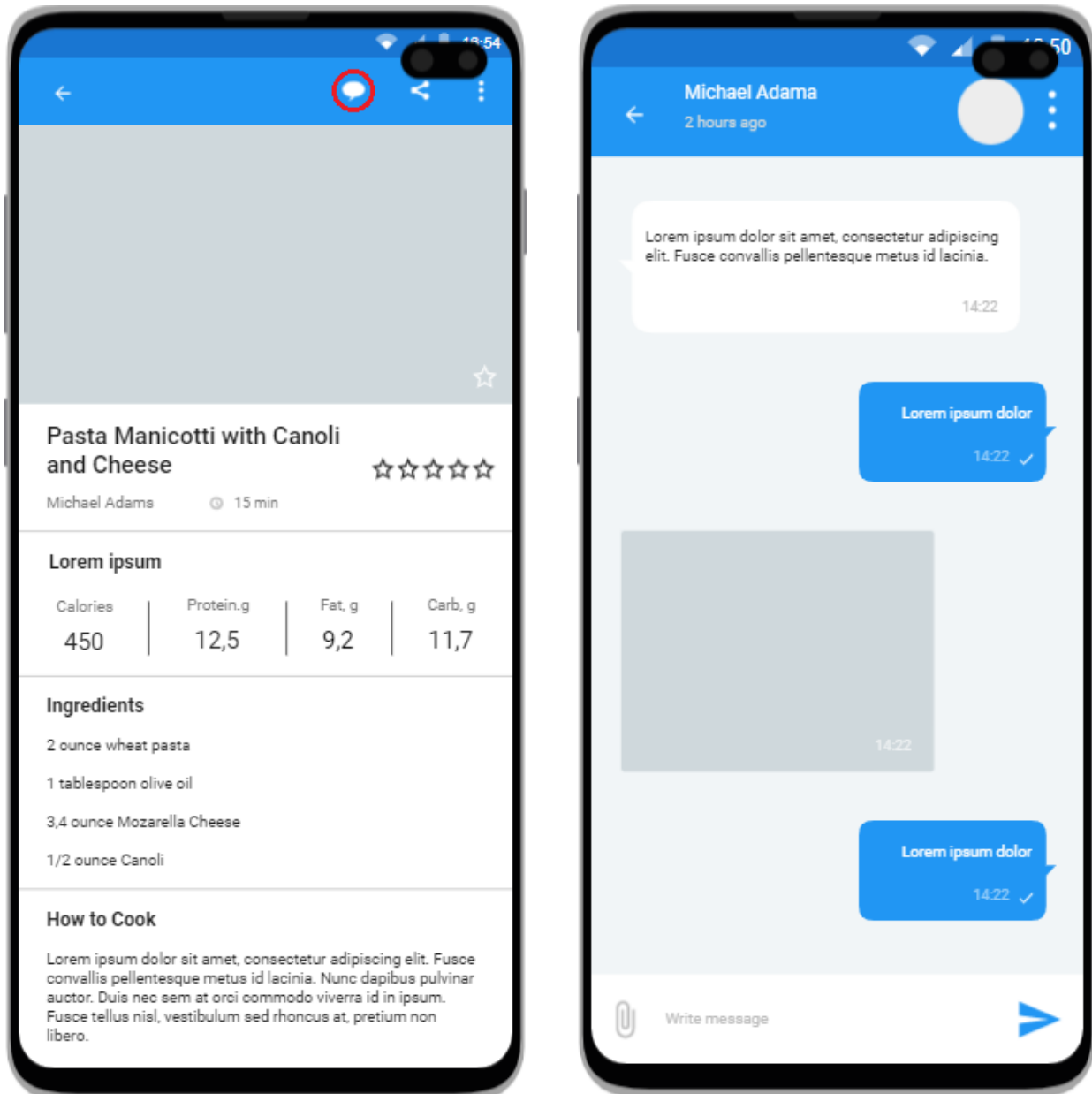
This is the screens showing how a user can rate and review a recipe. The user can rate by selecting the amount of star he/she wish to give and a user can write a review at the bottom of the screen.

## Save Recipe to Cookbook Screen



This is the screens showing a user saving the search recipe to a cookbook. The user presses the star in the image and all created cookbooks are displayed for the user to choose one.

## Private Message Screen



This is the screens showing how a user can send a private message to any other user by pressing on the message icon on the top of the screen.

# Technology Stack

## Frontend



## Backend



## Database



## Monitoring



## Version Control



## Development Environment

